

# LOAD CHART **MXC1250-** **MODEL: MAC 25 FULL POWER BOOM** **1500KG COUNTERWEIGHT** **SPECIFICATIONS :**

APPLICABLE STANDARDS : AS 1418.1, AS1418.5  
CRANE CLASSIFICATION : C3

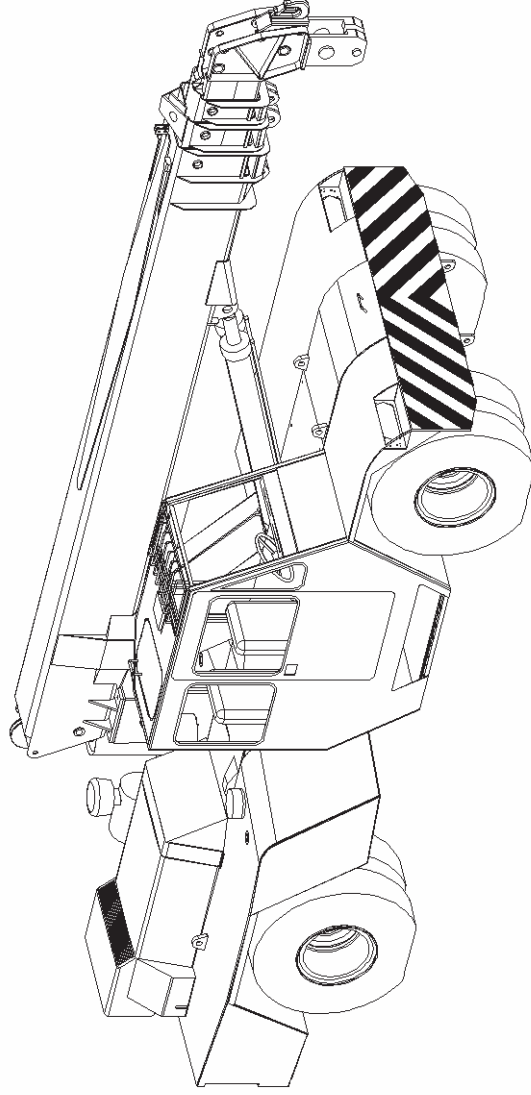
DETACHABLE COUNTERWEIGHT : 1500 KG  
- TO BE FRONT MOUNTED FOR ROAD TRAVEL  
- FRANNA PART NO. PLMXF2009

CONDITIONS :  
FRONT SPRING LOCKOUTS TO BE ENGAGED FOR ALL  
LIFTING AND PICK AND CARRY OPERATIONS

WINCH ROPE :  
DIAMETER : 14mm  
CONST : COMPAK 35W x 7 NR 2070 MPa  
MIN. BREAKING FORCE 165 kN  
MACHINE SPLICE & THIMBLE EYE  
ONE END ONLY, LENGTH 110m

RETRACT ROPE :  
DIAMETER : 11mm  
CONST : 6 x 25 WRC G2070. MIN. BREAKING FORCE 82.4 kN

EXTENSION CHAIN :  
TYPE : BL1066 LEAF CHAIN. MIN. BREAKING FORCE 40 000 KGF



TYRE SPECIFICATIONS		
Condition	Speed	Load Rating
Pick & Carry	<1.44 km/h	10500 kg per tyre at 120psi (dual fitment)
Highway	80 km/h	3050 kg per tyre at 90psi (dual fitment)

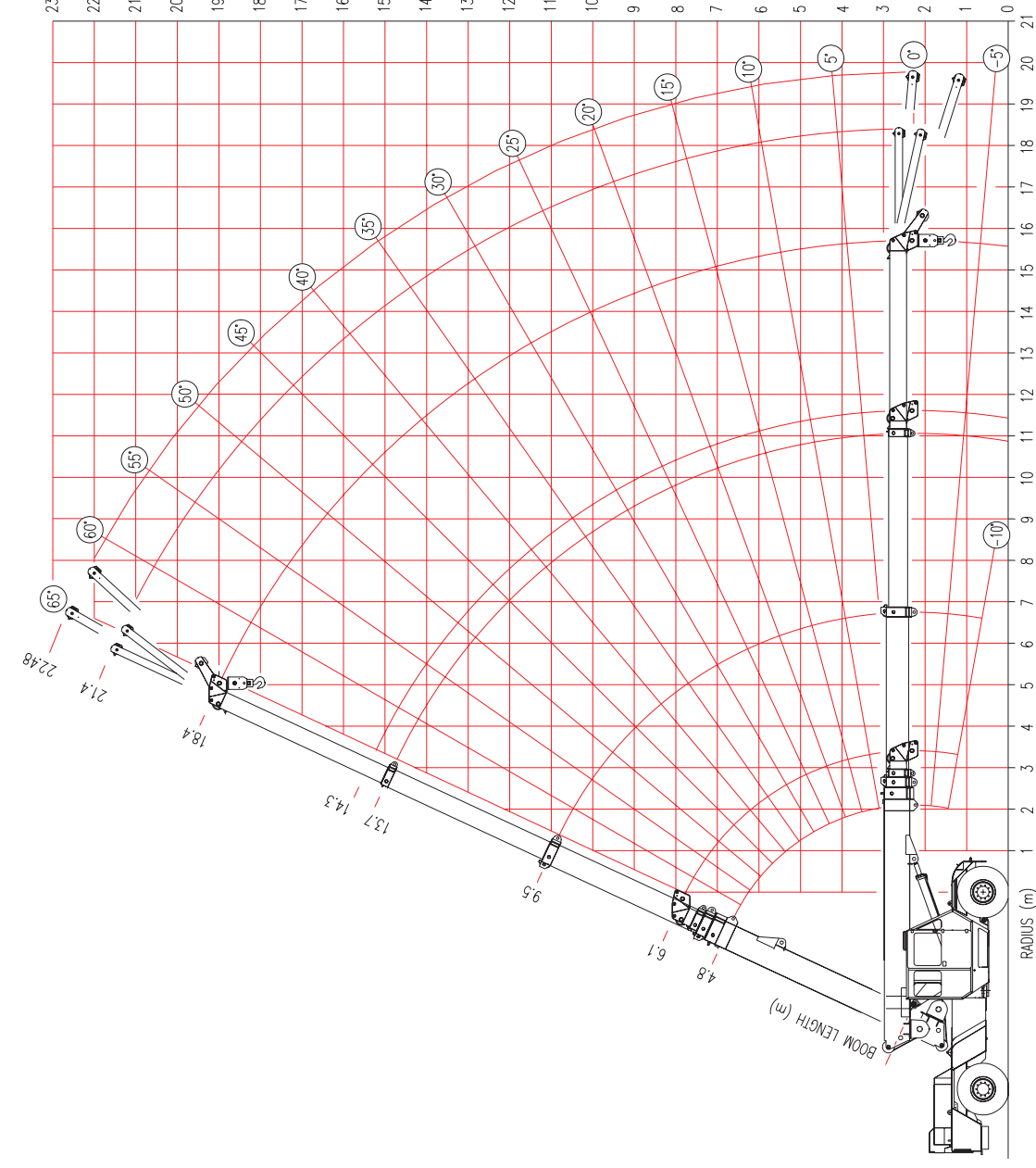
TYRE INFLATION CHART		
Position	Construction	Inflation Pressure – psi
		Pick & Carry Highway Travel
Front	14.00 x 20	120
Rear	14.00 x 20	90



TEREX | FRANNA

ABN : 86 010 671 048  
ACN : 010 671 048  
E-Mail : [info@terex.com.au](mailto:info@terex.com.au)  
Internet : [www.terex.com.au](http://www.terex.com.au)

# LOAD CHART MXC1250- MODEL: MAC 25 FULL POWER BOOM 1500KG COUNTERWEIGHT



## LIST OF DUTIES:

### 1500KG COUNTERWEIGHT ON FRONT

101	FALL BLOCK
102	RHINO HOOK
103	OFFSET HEAD – BOTTOM POSITION
104	OFFSET HEAD – TOP POSITION
105	3M FLYJIB – TOP POSITION – 0° OFFSET
106	3M FLYJIB – TOP POSITION – 12½° OFFSET
107	4M FLYJIB – TOP POSITION – 5° OFFSET
108	4M FLYJIB – BOTTOM POSITION – 17½° OFFSET
109	MAN BASKET
110	BUTT LUG
111	LUG 1 – BOOM 1
112	LUG 2 – BOOM 2

### 1500KG COUNTERWEIGHT ON REAR

201	FALL BLOCK
202	RHINO HOOK
203	OFFSET HEAD – BOTTOM POSITION
204	OFFSET HEAD – TOP POSITION
205	3M FLYJIB – TOP POSITION – 0° OFFSET
206	3M FLYJIB – TOP POSITION – 12½° OFFSET
207	4M FLYJIB – TOP POSITION – 5° OFFSET
208	4M FLYJIB – BOTTOM POSITION – 17½° OFFSET
209	MAN BASKET
210	BUTT LUG
211	LUG 1 – BOOM 1
212	LUG 2 – BOOM 2

EQUIPMENT	MASS
FOUR/SIX PART FALL BLOCK	PLMXA3018 180 kg
FOUR/SIX PART FALL BLOCK	PLMXA3033 230 kg
25 T HOOK	PP2087500 20 kg
9 T HOOK	PP2190200 10 kg
SINGLE PART HOOK BLOCK	PL16M2090 30 kg
RHINO HOOK	PLMXF3015 25 kg
12 METRIC TONNE SPREADER BAR	PL16A3035 94 kg
15 METRIC TONNE SPREADER BAR	PL15A8023 100 kg

MAC-25 FALL BLOCK LOAD CHART - 10 DEG. ART.  
COUNTERWEIGHT ON FRONT OF CRANE - SPRING LOCKOUTS ENGAGED

S.W.L IN KILOGRAMS FOR SLEW ANGLES OF 10 DEGREES OR LESS EITHER  
SIDE OF STRAIGHT AHEAD (INDICATED BY GREEN LED ON DASH).

BOOM ANGLE - UNDEFLECTED (REF.)

NOTE: VALUES IN BRACKETS ( ) ARE ACTUAL RADIUS AT ZERO DEG. BOOM ANGLE.

LMI DUTY

101

S.W.L. ARE BASED ON 66.7% STABILITY & STRENGTH  
- S.W.L. ABOVE BOLD RED LINE ARE STRUCTURAL  
S.W.L. ARE BASED ON FIRM LEVEL GROUND (1% SLOPE (0.6 DEG) AS PER AS1418.5)  
WITH TYRES INFLATED AS PER NOTES

LIFT & CARRY - THE S.W.L. SHALL BE CARRIED WITH THE MINIMUM BOOM LENGTH & AS  
CLOSE TO THE GROUND AS POSSIBLE AT SPEEDS NOT IN EXCESS OF 0.4 M/SEC (1.44 KM/HR)

Radius in Metres	BOOM PIVOT TO HEAD SHEAVES - THIRD BOOM RETRACTED (metres)																	THIRD BOOM EXTENDING (metres)												
	6.12	6.50	7.00	7.50	8.00	8.50	9.00	9.50	10.00	10.50	11.00	11.50	12.00	12.50	13.00	13.50	14.32													
	23900 48	23850 51	23750 54	23800 57	23800 59	23750 61	23750 63	23750 65	23750	23750	23750	23750	23750	23750	23750	23750	23750													
2.0	19950 40	19900 44	19850 48	19800 51	19750 54	19750 57	19700 59	19650 61	19650 62	19600 64	19300 65							WINCH S.W.L. SINGLE PART 4200 TWO PARTS 8400 FOUR PARTS 16800 SIX PARTS 25000												
2.5	15700 32	15650 37	15600 42	15600 46	15550 50	15500 52	15500 55	15500 57	15450 59	15400 61	15400 62	15350 63	14600 65																	
3.0	12800 21	12800 29	12800 35	12750 41	12700 45	12700 48	12650 51	12650 53	12600 55	12600 57	12600 59	12550 61	12550 62	12550 63	12550 64	12250 65														
3.5	11050 (3.4)	10750 17	10750 28	10750 34	10700 39	10700 43	10650 47	10650 49	10600 52	10600 54	10600 56	10550 58	10550 59	10550 61	10500 62	10500 63	10500 65	10500												
4.0		9750 (3.8)	9200 17	9200 27	9200 33	9150 38	9150 42	9150 45	9100 48	9100 51	9100 53	9050 55	9050 56	9050 58	9050 59	9000 61	9000 62	9000 63	9050 64	9100 65										
5.0			8450 (4.3)	7400 (4.8)	7050 16	7050 25	7050 31	7000 36	7000 40	7000 43	6950 46	6950 48	6950 50	6950 52	6900 54	6900 56	6900 58	6900 59	6950 61	7000 62	7050 63	7100 64	7150 65	7200 65						
6.0					6550 (5.3)	5850 (5.8)	5600 15	5600 24	5600 30	5600 34	5550 38	5550 41	5550 44	5550 46	5550 48	5500 50	5500 53	5550 55	5600 56	5650 57	5700 58	5750 60	5750 61	5800 62						
7.0							5250 (6.3)	4750 (6.8)	4550 14	4550 23	4550 28	4550 33	4550 36	4550 39	4550 42	4500 44	4500 48	4550 50	4600 52	4650 53	4650 54	4700 56	4750 57	4800 59						
8.0									4300 (7.3)	3900 (7.8)	3800 14	3800 22	3800 27	3800 30	3800 35	3750 38	3750 42	3800 44	3850 45	3900 47	3900 48	3950 50	4000 51	4000 53	4050					
9.0											3600 (8.3)	3300 (8.8)	3200 13	3200 21	3200 26	3200 30	3150 35	3200 36	3250 39	3250 41	3300 43	3350 45	3400 47	3400 48	3450 50					
10													3000 (9.3)	2800 (9.8)	2700 12	2700 20	2700 28	2700 32	2800 35	2850 38	2850 40	2900 42	2900 44	2950 45	2950 47					
11															2550 (10.3)	2350 (10.8)	2300 17	2350 19	2400 24	2450 28	2450 31	2500 34	2550 37	2600 41	2600 42					
12																	2100 (11.6)	2050 (11.8)	2050 12	2100 19	2100 23	2150 27	2200 30	2250 33	2250 36	2250 37				
13																			1950 (12.3)	1850 (12.8)	1850 11	1900 18	1950 23	1950 27	2000 30	2000 32				
14																					1750 (13.3)	1650 (13.8)	1700 11	1700 18	1750 22	1750 25				
15																						1600 (14.3)	1500 (14.8)	1500 11	1550 16	1550 16				
15.71																									1450 (15.3)	1400 (15.7)				

MAC-25 FALL BLOCK LOAD CHART - 40 DEG. ART.  
COUNTERWEIGHT ON FRONT OF CRANE - SPRING LOCKOUTS ENGAGED

S.W.L IN KILOGRAMS FOR SLEW ANGLES OF GREATER THAN 10 DEGREES UP TO 40 DEGREES EITHER SIDE OF STRAIGHT AHEAD (INDICATED BY RED LED ON DASH).

BOOM ANGLE - UNDEFLECTED (REF.)

NOTE: VALUES IN BRACKETS ( ) ARE ACTUAL RADIUS AT ZERO DEG. BOOM ANGLE.

LMI DUTY

101

S.W.L. ARE BASED ON 66.7% STABILITY & STRENGTH

- S.W.L. ABOVE BOLD RED LINE ARE STRUCTURAL

S.W.L. ARE BASED ON FIRM LEVEL GROUND (1% SLOPE (0.6 DEG) AS PER AS1418.5)

WITH TYRES INFLATED AS PER NOTES

LIFT & CARRY - THE S.W.L. SHALL BE CARRIED WITH THE MINIMUM BOOM LENGTH & AS

CLOSE TO THE GROUND AS POSSIBLE AT SPEEDS NOT IN EXCESS OF 0.4 M/SEC (1.44 KI/HR)

Radius in Metres	BOOM PIVOT TO HEAD SHEAVES - THIRD BOOM RETRACTED (metres)																								THIRD BOOM EXTENDING (metres)											
	6.12	6.50	7.00	7.50	8.00	8.50	9.00	9.50	10.00	10.50	11.00	11.50	12.00	12.50	13.00	13.50	14.32	14.50	15.00	15.50	16.00	16.50	17.00	17.50	18.00	18.42										
	23750	22450	20950	19200	17750	16600	15600	14750																												
1.4	48	51	54	57	59	61	63	65																												
2.0	17850	17850	17800	16850	15950	15150	14500	13750	13000	12350	11750												WINCH S.W.L.													
2.5	40	44	48	51	54	57	59	61	62	64	65											SINGLE PART 4200														
																						TWO PARTS 8400														
3.0	11450	11400	11350	11350	11300	11300	11300	10950	10550	10150	9800	9500	9200									FOUR PARTS 16800														
	21	29	35	41	45	48	51	53	55	57	59	61	62	63	64	65						SIX PARTS 25000														
3.5	9800	9550	9550	9550	9500	9500	9450	9450	9450	9450	9150	8850	8550	8300	8050	7850	7650	7300	7250																	
	(3.4)	17	28	34	39	43	47	49	52	54	56	58	59	61	62	63	65	65																		
4.0		8650	8150	8150	8150	8150	8100	8100	8050	8050	8000	7750	7550	7350	7150	6950	6650	6650	6500	6400																
		(3.8)	17	27	33	38	42	45	48	51	53	55	56	58	59	61	62	63	64	65																
5.0			7450	6500	6200	6200	6200	6200	6150	6150	6150	6100	6100	6100	6000	5800	5600	5550	5500	5400	5350	5300	5200	5150	5100											
			(4.3)	(4.8)	16	25	31	36	40	43	46	48	50	52	54	56	58	58	59	61	62	63	63	64	65											
6.0						5750	5100	4900	4900	4900	4850	4850	4850	4850	4850	4850	4750	4750	4700	4650	4600	4550	4500	4450	4400	4350										
						(5.3)	(5.8)	15	24	30	34	38	41	44	46	48	50	53	55	56	57	58	60	61	61	62										
7.0								4600	4100	3950	3950	3950	3950	3950	3950	3950	3900	3950	3950	4000	4000	3950	3900	3850	3850	3800										
								(6.3)	(6.8)	14	23	28	33	36	39	42	44	48	50	52	53	54	56	57	58	59										
8.0										3700	3400	3250	3250	3250	3250	3250	3250	3250	3300	3350	3350	3400	3450	3400	3350	3350										
										(7.3)	(7.8)	14	22	27	31	35	38	42	43	45	47	48	50	51	53	54										
9.0												3100	2800	2700	2700	2700	2700	2700	2750	2800	2850	2850	2900	2950	2950	2950										
											(8.3)	(8.8)	13	21	26	30	35	36	39	41	43	45	47	48	50	51										
10													2550	2350	2300	2300	2300	2300	2350	2400	2400	2450	2500	2550	2550	2550										
												(9.3)	(9.8)	12	20	28	28	29	32	35	38	40	42	44	45	47										
11															2150	2000	1950	1950	2000	2050	2050	2100	2100	2150	2200	2200										
															(10.3)	(10.8)	17	19	24	28	31	34	37	39	41	42										
12																	1750	1700	1700	1750	1800	1800	1850	1850	1900	1900										
																(11.6)	(11.8)	12	19	23	27	30	33	36	37	37										
13																			1600	1500	1500	1550	1600	1600	1650	1650										
																			(12.3)	(12.8)	11	18	23	27	30	32										
14																					1450	1350	1350	1400	1400	1450										
																					(13.3)	(13.8)	11	18	22	25										
15																							1300	1250	1250	1250										
																							(14.3)	(14.8)	11	16										
15.71																									1150	1100										
																										(15.3)	(15.7)									

MAC-25 RHINO HOOK LOAD CHART - 10 DEG  
COUNTERWEIGHT ON FRONT OF CRANE - SPRING LOCKOUTS ENGAGED

S.W.L IN KILOGRAMS FOR SLEW ANGLES OF 10 DEGREES OR LESS EITHER  
SIDE OF STRAIGHT AHEAD (INDICATED BY GREEN LED ON DASH).

BOOM ANGLE - UNDEFLECTED (REF.)

NOTE: VALUES IN BRACKETS ( ) ARE ACTUAL RADIUS AT ZERO DEG. BOOM ANGLE.

LMI DUTY **102**

S.W.L. ARE BASED ON 66.7% STABILITY & STRENGTH  
- S.W.L. ABOVE BOLD RED LINE ARE STRUCTURAL  
S.W.L. ARE BASED ON FIRM LEVEL GROUND (1% SLOPE (0.6 DEG) AS PER AS14:18.5)  
WITH TYRES INFLATED AS PER NOTES  
LIFT & CARRY - THE S.W.L. SHALL BE CARRIED WITH THE MINIMUM BOOM LENGTH & AS  
CLOSE TO THE GROUND AS POSSIBLE AT SPEEDS NOT IN EXCESS OF 0.4 M/SEC (1.44 KMH/HR)

Radius in Metres	BOOM PIVOT TO HOOK CENTRE - THIRD BOOM RETRACTED (metres)																THIRD BOOM EXTENDING (metres)									
	6.45	7.00	7.50	8.00	8.50	9.00	9.50	10.00	10.50	11.00	11.50	12.00	12.50	13.00	13.50	14.00	14.65	15.00	15.50	16.00	16.50	17.00	17.50	18.00	18.50	18.75
	15000	15000	15000	15000	15000	15000	15000	15000	15000	15000	15000	15000	15000	15000	15000	15000										
1.4	52	55	58	60	62	64	65																			
2.0	15000	15000	15000	15000	15000	15000	15000	15000	15000	15000	15000	15000	15000	15000	15000	15000										
2.5	44	49	52	55	57	59	61	63	64	65																
3.0	37	43	47	50	53	56	58	59	61	63	64	65														
	13000	12950	12900	12850	12800	12750	12700	12650	12600	12550	12500	12450	12400	12350	12300	12250										
	29	36	41	45	49	52	54	56	58	60	61	62	64	65												
3.5	10900	10900	10900	10850	10800	10750	10700	10650	10600	10550	10500	10450	10400	10350	10300	10250										
	17	29	35	40	44	47	50	52	55	56	58	60	61	62	63	64										
4.0	10050	9350	9350	9300	9300	9250	9250	9250	9200	9150	9150	9150	9150	9150	9100	9100										
	(3.7)	18	28	34	39	43	46	49	51	53	55	57	58	60	61	62										
5.0		8550	7500	7150	7150	7150	7100	7100	7100	7050	7050	7050	7000	7000	7000	7000										
		(4.3)	(4.8)	17	26	32	37	40	44	46	49	51	53	54	56	57										
6.0				6650	5900	5700	5700	5650	5650	5650	5650	5600	5600	5600	5600	5550										
				(5.3)	(5.8)	16	24	30	35	38	42	44	47	49	51	52										
7.0						5300	4800	4650	4650	4600	4600	4600	4600	4600	4600	4550										
						(6.3)	(6.8)	15	23	29	33	37	40	42	45	47										
8.0								4350	3950	3850	3850	3850	3850	3850	3800	3800										
								(7.3)	(7.8)	14	22	28	32	35	38	41										
9.0										3650	3350	3250	3250	3250	3250	3200										
										(8.3)	(8.8)	13	21	27	31	34										
10												3050	2800	2750	2750	2750										
												(9.3)	(9.8)	13	20	26										
11														2600	2400	2350										
														(10.3)	(10.8)	12										
12																2250										
																(11.3)										
13																										
14																										
15																										
16																										

MAC-25 RHINO HOOK LOAD CHART - 40 DEG  
COUNTERWEIGHT ON FRONT OF CRANE - SPRING LOCKOUTS ENGAGED

SW L IN KILOGRAMS FOR SLEW ANGLES OF GREATER THAN 10 DEGREES UP TO 40  
DEGREES EITHER SIDE OF STRAIGHT AHEAD (INDICATED BY RED LED ON DASH).

BOOM ANGLE - UNDEFLECTED (REF.)

NOTE: VALUES IN BRACKETS ( ) ARE ACTUAL RADIUS AT ZERO DEG. BOOM ANGLE.

LMI DUTY **102**

SW L ARE BASED ON 66.7% STABILITY & STRENGTH  
- SW L ABOVE BOLD RED LINE ARE STRUCTURAL  
SW L ARE BASED ON FIRM LEVEL GROUND (1% SLOPE (0.6 DEG) AS PER AS14.18.5)  
WITH TYRES INFLATED AS PER NOTES  
LIFT & CARRY - THE SW L SHALL BE CARRIED WITH THE MINIMUM BOOM LENGTH & AS  
CLOSE TO THE GROUND AS POSSIBLE AT SPEEDS NOT IN EXCESS OF 0.4 M/SEC (1.44 KMH/HR)

Radius in Metres	BOOM PIVOT TO HOOK CENTRE - THIRD BOOM RETRACTED (metres)																THIRD BOOM EXTENDING (metres)									
	6.45	7.00	7.50	8.00	8.50	9.00	9.50	10.00	10.50	11.00	11.50	12.00	12.50	13.00	13.50	14.00	14.65	15.00	15.50	16.00	16.50	17.00	17.50	18.00	18.50	18.75
1.4	15000	15000	15000	15000	15000	15000	14850																			
	52	55	58	60	62	64	65																			
2.0	15000	15000	15000	15000	15000	14650	13850	13100	12400	11850																
	44	49	52	55	57	59	61	63	64	65																
2.5	14200	14150	14100	14050	13550	12950	12400	11950	11500	11050	10550	10100														
	37	43	47	50	53	56	58	59	61	63	64	65														
3.0	11600	11550	11550	11500	11450	11450	11100	10650	10250	9900	9600	9300	9050	8700												
	29	36	41	45	49	52	54	56	58	60	61	62	64	65												
3.5	9750	9700	9700	9650	9650	9600	9600	9550	9250	8950	8650	8400	8150	7950	7700	7500										
	17	29	35	40	44	47	50	52	55	56	58	60	61	62	63	64										
4.0	8950	8300	8300	8250	8250	8200	8200	8200	8150	8100	7850	7650	7400	7200	7000	6850	6650	6550	6450							
	(3.7)	18	28	34	39	43	46	49	51	53	55	57	58	60	61	62	63	64	65							
5.0		7600	6650	6300	6300	6300	6300	6300	6250	6250	6200	6200	6200	6050	5900	5750	5550	5500	5450	5350	5300	5250	5150	5100		
		(4.3)	17	26	32	37	40	44	46	49	51	53	54	56	57	59	59	60	61	62	63	64	65	65		
6.0				5850	5200	5000	5000	5000	4950	4950	4950	4950	4900	4900	4900	4900	4750	4700	4650	4600	4550	4500	4450	4400	4350	4350
				(5.3)	16	24	30	35	38	42	44	47	49	51	52	54	55	57	58	59	60	61	62	63	63	
7.0							4650	4200	4050	4050	4000	4000	4000	4000	4000	3950	3950	4000	4050	4000	3950	3900	3850	3800	3800	
							(6.3)	15	23	29	33	37	40	42	45	47	49	50	52	53	55	56	57	58	59	60
8.0									3800	3450	3350	3300	3300	3300	3300	3300	3300	3300	3350	3400	3400	3450	3400	3400	3350	3350
									(7.3)	14	22	28	32	35	38	41	44	45	47	49	50	52	53	54	55	56
9.0									3150	2850	2750	2750	2750	2750	2750	2750	2800	2800	2850	2900	2900	2900	2950	3000	2950	2950
									(8.3)	13	21	27	31	34	38	39	42	44	46	47	49	50	51	52	51	52
10												2600	2400	2350	2350	2350	2350	2400	2400	2450	2500	2500	2550	2550	2550	
												(9.3)	13	20	26	31	33	36	38	40	42	44	46	47	48	
11														2200	2000	1950	1950	2000	2050	2050	2100	2150	2200	2200	2200	
														(10.3)	12	21	25	29	32	35	37	39	41	43	44	
12															1850	1650	1700	1750	1750	1800	1850	1900	1900	1900	1950	
														(11.3)	12	19	24	28	31	34	36	38	39	39	39	
13																	1600	1500	1550	1600	1600	1650	1650	1700	1700	
																	(12.3)	12	18	23	27	30	33	34	34	
14																		1450	1350	1400	1400	1400	1450	1450	1450	
																		(13.3)	11	18	23	26	28	28	28	
15																					1300	1250	1250	1250	1250	
																					(14.3)	11	17	20	20	
16																							1150	1100	1100	
																							(15.3)	(15.8)	(16.)	

MAC-25 OFFSET HEAD BOTTOM POSITION LOAD CHART - 10 DEG

COUNTERWEIGHT ON FRONT OF CRANE - SPRING LOCKOUTS ENGAGED

S.W.L IN KILOGRAMS FOR SLEW ANGLES OF 10 DEGREES OR LESS EITHER  
SIDE OF STRAIGHT AHEAD (INDICATED BY GREEN LED ON DASH).

BOOM ANGLE - UNDEFLECTED (REF.)

NOTE: VALUES IN BRACKETS ( ) ARE ACTUAL RADIUS AT ZERO DEG. BOOM ANGLE.

LMI DUTY

103

S.W.L. ARE BASED ON 66.7% STABILITY & STRENGTH  
- S.W.L. ABOVE BOLD RED LINE ARE STRUCTURAL  
S.W.L. ARE BASED ON FIRM LEVEL GROUND (1% SLOPE (0.6 DEG) AS PER AS14:18.5)  
WITH TYRES INFLATED AS PER NOTES

LIFT & CARRY - THE S.W.L. SHALL BE CARRIED WITH THE MINIMUM BOOM LENGTH & AS  
CLOSE TO THE GROUND AS POSSIBLE AT SPEEDS NOT IN EXCESS OF 0.4 M/SEC (1.44 KMH/HR)

Radius in Metres	BOOM PIVOT TO EDGE OF SHEAVE - THIRD BOOM RETRACTED (metres)																		THIRD BOOM EXTENDING (metres)									
	6.86	7.00	7.50	8.00	8.50	9.00	9.50	10.00	10.50	11.00	11.50	12.00	12.50	13.00	13.50	14.00	14.50	15.06	15.50	16.00	16.50	17.00	17.50	18.00	18.50	19.16		
	8400	8400	8400	8400	8400	8400	8400	8400	8400	8400	8400	8400	8400	8400	8400	8400	8400	8400	8400	8400	8400	8400	8400	8400	8400	8400	4200	8400
1.4	55	56	59	61	63	65																						
2.0	8400	8400	8400	8400	8400	8400	8400	8400	8400	8400	8400	8400	8400	8400	8400	8400	8400	8400	8400	8400	8400	8400	8400	8400	8400	8400	8400	8400
2.5	49	50	53	56	58	60	62	64	65																			
3.0	8400	8400	8400	8400	8400	8400	8400	8400	8400	8400	8400	8400	8400	8400	8400	8400	8400	8400	8400	8400	8400	8400	8400	8400	8400	8400	8400	8400
3.5	36	38	43	46	50	52	55	57	59	60	62	63	64	65														
4.0	8400	8400	8400	8400	8400	8400	8400	8400	8400	8400	8400	8400	8400	8400	8400	8400	8400	8400	8400	8400	8400	8400	8400	8400	8400	8400	8400	8400
4.2	19	29	35	40	44	47	50	52	54	56	58	59	60	62	63	64	65											
5.0	8400	7650	7300	7300	7250	7250	7200	7200	7200	7150	7150	7150	7100	7100	7100	7100	7050	7100	7100	7150	7200	7200	7250	7250	7250	7250	7250	7250
6.0					6050	5800	5800	5800	5750	5750	5750	5700	5700	5700	5700	5650	5650	5650	5700	5700	5700	5750	5800	5800	5850	5850	5850	5850
7.0						16	25	31	36	39	42	45	47	49	51	53	54	56	57	58	59	60	61	62	63	64	64	64
8.0							5400	4900	4750	4750	4700	4700	4700	4700	4650	4650	4650	4650	4650	4700	4750	4750	4800	4800	4850	4900	4900	4900
9.0									16	24	30	34	37	40	43	45	47	49	51	52	54	55	56	57	59	59	61	61
10									4450	4050	3950	3950	3900	3900	3900	3900	3900	3850	3900	3950	3950	4000	4050	4050	4100	4100	4100	4100
11																												
12																												
13																												
14																												
15																												
16.4																												

MAC-25 OFFSET HEAD BOTTOM POSITION LOAD CHART - 40 DEG

COUNTERWEIGHT ON FRONT OF CRANE - SPRING LOCKOUTS ENGAGED

S.W.L IN KILOGRAMS FOR SLEW ANGLES OF GREATER THAN 10 DEGREES UP TO 40  
DEGREES EITHER SIDE OF STRAIGHT AHEAD (INDICATED BY RED LED ON DASH).

BOOM ANGLE - UNDEFLECTED (REF.)

NOTE: VALUES IN BRACKETS ( ) ARE ACTUAL RADIUS AT ZERO DEG. BOOM ANGLE.

LMI DUTY

103

S.W.L. ARE BASED ON 66.7% STABILITY & STRENGTH

- S.W.L. ABOVE BOLD RED LINE ARE STRUCTURAL

S.W.L. ARE BASED ON FIRM LEVEL GROUND (1% SLOPE (0.6 DEG) AS PER AS14:18.5)

WITH TYRES INFLATED AS PER NOTES

LIFT & CARRY - THE S.W.L. SHALL BE CARRIED WITH THE MINIMUM BOOM LENGTH & AS

CLOSE TO THE GROUND AS POSSIBLE AT SPEEDS NOT IN EXCESS OF 0.4 M/SEC (1.44 KM/HR)

Radius in Metres	BOOM PIVOT TO EDGE OF SHEAVE - THIRD BOOM RETRACTED (metres)																		THIRD BOOM EXTENDING (metres)									
	6.86	7.00	7.50	8.00	8.50	9.00	9.50	10.00	10.50	11.00	11.50	12.00	12.50	13.00	13.50	14.00	14.50	15.06	15.50	16.00	16.50	17.00	17.50	18.00	18.50	19.16		
	8400	8400	8400	8400	8400	8400	8400	8400	8400	8400	8400	8400	8400	8400	8400	8400	8400	8400	8400	8400	8400	8400	8400	8400	8400	8400	4200	8400
1.4	55	56	59	61	63	65																						
2.0	8400	8400	8400	8400	8400	8400	8400	8400	8400	8400	8400	8400	8400	8400	8400	8400	8400	8400	8400	8400	8400	8400	8400	8400	8400	8400	8400	8400
2.5	49	50	53	56	58	60	62	64	65																			
3.0	8400	8400	8400	8400	8400	8400	8400	8400	8400	8400	8400	8400	8400	8400	8400	8400	8400	8400	8400	8400	8400	8400	8400	8400	8400	8400	8400	8400
3.5	36	38	43	46	50	52	55	57	59	60	62	63	64	65														
4.0	8400	8400	8400	8400	8400	8400	8400	8400	8400	8400	8400	8400	8400	8400	8400	8400	8400	8400	8400	8400	8400	8400	8400	8400	8400	8400	8400	8400
5.0	7750	6750	6450	6450	6450	6450	6450	6450	6450	6450	6450	6450	6450	6450	6450	6450	6450	6450	6450	6450	6450	6450	6450	6450	6450	6450	6450	6450
6.0																												
7.0																												
8.0																												
9.0																												
10																												
11																												
12																												
13																												
14																												
15																												
16.4																												



MAC-25 OFFSET HEAD TOP POSITION LOAD CHART - 10 DEG

COUNTERWEIGHT ON FRONT OF CRANE - SPRING LOCKOUTS ENGAGED

S.W.L IN KILOGRAMS FOR SLEW ANGLES OF 10 DEGREES OR LESS EITHER  
SIDE OF STRAIGHT AHEAD (INDICATED BY GREEN LED ON DASH).

BOOM ANGLE - UNDEFLECTED (REF.)

NOTE: VALUES IN BRACKETS ( ) ARE ACTUAL RADIUS AT ZERO DEG. BOOM ANGLE.

LMI DUTY

104

S.W.L. ARE BASED ON 66.7% STABILITY & STRENGTH  
- S.W.L. ABOVE BOLD RED LINE ARE STRUCTURAL  
S.W.L. ARE BASED ON FIRM LEVEL GROUND (1% SLOPE (0.6 DEG) AS PER AS14:18.5)  
WITH TYRES INFLATED AS PER NOTES

LIFT & CARRY - THE S.W.L. SHALL BE CARRIED WITH THE MINIMUM BOOM LENGTH & AS  
CLOSE TO THE GROUND AS POSSIBLE AT SPEEDS NOT IN EXCESS OF 0.4 M/SEC (1.44 KMH/HR)

Radius in Metres	BOOM PIVOT TO EDGE OF SHEAVE - THIRD BOOM RETRACTED (metres)																	THIRD BOOM EXTENDING (metres)									
	6.82	7.00	7.50	8.00	8.50	9.00	9.50	10.00	10.50	11.00	11.50	12.00	12.50	13.00	13.50	14.00	14.50	15.02	15.50	16.00	16.50	17.00	17.50	18.00	18.50	19.12	
	8400	8400	8400	8400	8400	8400	8400	8400	8400	8400	8400	8400	8400	8400	8400	8400	8400	8400	8400	8400	8400	8400	8400	8400	8400	8400	
1.4	52	53	56	58	60	62	64																				
2.0	8400	8400	8400	8400	8400	8400	8400	8400	8400	8400	8400	8400	8400	8400	8400	8400	8400	8400	8400	8400	8400	8400	8400	8400	8400	8400	
2.5	45	47	50	53	56	58	60	61	63	64																	
3.0	8400	8400	8400	8400	8400	8400	8400	8400	8400	8400	8400	8400	8400	8400	8400	8400	8400	8400	8400	8400	8400	8400	8400	8400	8400	8400	
3.5	32	34	40	44	47	50	53	55	57	58	60	61	63	64	65												
4.0	8400	8400	8400	8400	8400	8400	8400	8400	8400	8400	8400	8400	8400	8400	8400	8400	8400	8400	8400	8400	8400	8400	8400	8400	8400	8400	
4.5	16	26	32	37	41	45	47	50	52	54	56	57	59	60	61	62	63	64	64	64	64	64	64	64	64	64	
5.0	8400	7600	7250	7200	7200	7200	7150	7150	7150	7100	7100	7050	7050	7050	7000	7000	7000	6950	7000	7050	7100	7100	7150	7200			
6.0				6750	6000	5750	5750	5750	5700	5700	5650	5650	5650	5600	5600	5600	5600	5550	5600	5650	5700	5700	5750	5800	5850		
7.0				(5.3)	(5.8)	14	23	29	34	37	40	43	46	48	50	51	53	54	56	57	58	59	60	61	62	63	
8.0						5400	4900	4700	4700	4700	4650	4650	4650	4600	4600	4600	4600	4550	4600	4650	4700	4700	4750	4800	4800		
9.0						(6.3)	(6.8)	14	22	28	32	36	39	41	44	46	48	50	51	53	54	55	56	57	58	59	
10								4450	4050	3900	3900	3850	3850	3850	3850	3850	3850	3800	3850	3900	3900	3950	4000	4000	4050	4050	
11								(7.3)	(7.8)	13	21	27	31	34	37	40	42	44	46	48	49	51	52	53	55	56	
12										3700	3400	3300	3300	3250	3250	3250	3250	3250	3250	3300	3350	3400	3400	3450	3450	3450	
13										(8.3)	(8.8)	12	20	25	30	33	36	39	41	43	45	46	48	49	51	52	
14												3100	2900	2800	2800	2800	2750	2750	2800	2850	2900	2900	2950	2950	3000	3000	
15												(9.3)	(9.8)	12	19	25	29	32	35	37	40	42	43	45	47	48	
16.45												(10.3)	(10.8)	12	19	24	24	24	28	31	34	36	38	40	42	44	
NOTE : WEIGHT OF HOOKS, BLOCKS & OTHER LOAD HANDLING DEVICES SHALL BE ADDED TO THE WEIGHT OF THE LOAD																	2300	2100	2050	2100	2150	2200	2200	2250	2250	2300	
																(11.3)	(11.8)	12	18	23	27	30	33	35	37	40	
																		1950	1850	1850	1900	1900	1950	1950	2000	2000	
																	(12.3)	(12.3)	11	18	22	26	29	32	35	38	
																			1750	1650	1650	1700	1700	1750	1750	1800	
																			(13.3)	(13.8)	11	17	22	25	29	29	
																					1600	1500	1500	1550	1550	1550	
																					(14.3)	(14.8)	10	17	22	22	
																							1450	1400	1300	(16.5)	
																								(15.3)	(15.8)	(16.5)	

MAC-25 OFFSET HEAD TOP POSITION LOAD CHART - 40 DEG

COUNTERWEIGHT ON FRONT OF CRANE - SPRING LOCKOUTS ENGAGED

S.W.L. IN KILOGRAMS FOR SLEW ANGLES OF GREATER THAN 10 DEGREES UP TO 40  
DEGREES EITHER SIDE OF STRAIGHT AHEAD (INDICATED BY RED LED ON DASH).

BOOM ANGLE - UNDEFLECTED (REF.)

NOTE: VALUES IN BRACKETS ( ) ARE ACTUAL RADIUS AT ZERO DEG. BOOM ANGLE.

LMI DUTY

104

S.W.L. ARE BASED ON 66.7% STABILITY & STRENGTH

- S.W.L. ABOVE BOLD RED LINE ARE STRUCTURAL

S.W.L. ARE BASED ON FIRM LEVEL GROUND (1% SLOPE (0.6 DEG) AS PER AS14:18.5)

WITH TYRES INFLATED AS PER NOTES

LIFT & CARRY - THE S.W.L. SHALL BE CARRIED WITH THE MINIMUM BOOM LENGTH & AS



CLOSE TO THE GROUND AS POSSIBLE AT SPEEDS NOT IN EXCESS OF 0.4 M/SEC (1.44 KM/HR)

Radius in Metres		BOOM PIVOT TO EDGE OF SHEAVE - THIRD BOOM RETRACTED (metres)																	THIRD BOOM EXTENDING (metres)									
		6.82	7.00	7.50	8.00	8.50	9.00	9.50	10.00	10.50	11.00	11.50	12.00	12.50	13.00	13.50	14.00	14.50	15.02	15.50	16.00	16.50	17.00	17.50	18.00	18.50	19.12	
1.4	8400	8400	8400	8400	8400	8400	8400	8400	8400																			
	52	53	56	58	60	62	64																					
2.0	8400	8400	8400	8400	8400	8400	8400	8400	8400	8400	8400																	
	45	47	50	53	56	58	60	61	63	64													WINCH S.W.L.					
2.5	8400	8400	8400	8400	8400	8400	8400	8400	8400	8400	8400	8400												SINGLE PART		4200		
	39	41	45	49	52	54	56	58	60	61	63	64											TWO PARTS		8400			
3.0	8400	8400	8400	8400	8400	8400	8400	8400	8400	8400	8400	8400	8400	8400	8400													
	32	34	40	44	47	50	53	55	57	58	60	61	63	64	65													
3.5	8400	8400	8400	8400	8400	8400	8400	8400	8400	8400	8400	8400	8200	7950	7750	7550	7300											
	24	27	33	38	42	46	49	51	53	55	57	59	60	61	62	63	64											
4.0	8150	8400	8350	8350	8300	8250	8250	8250	8200	8150	7900	7650	7450	7250	7050	6850	6700	6550	6450									
	(4.1)	16	26	32	37	41	45	47	50	52	54	56	57	59	60	61	62	63	64									
5.0		7750	6750	6400	6400	6350	6350	6300	6300	6250	6250	6250	6200	6100	5900	5750	5650	5500	5400	5350	5300	5200	5150	5100				
		(4.3)	(4.8)	15	24	30	35	39	42	45	48	50	52	53	55	56	58	59	60	61	62	63	64	65				
6.0				5950	5300	5050	5050	5050	5000	5000	5000	4950	4950	4950	4900	4900	4800	4700	4650	4600	4550	4500	4450	4400	4350	4300		
				(5.3)	(5.8)	14	23	29	34	37	40	43	46	48	50	51	53	54	56	57	58	59	60	61	62	63		
7.0								4750	4250	4100	4100	4050	4050	4050	4000	4000	4000	4000	4000	3950	3900	3850	3800	3750				
								(6.3)	(6.8)	14	22	28	32	36	39	41	44	46	48	50	51	53	54	55	56	57		
8.0											3850	3500	3400	3350	3350	3300	3300	3300	3350	3400	3400	3450	3400	3350	3350	3300		
										(7.3)	(7.8)	13	21	27	31	34	37	40	42	44	46	48	49	51	52	53		
9.0											3200	2900	2800	2800	2800	2800	2800	2750	2800	2850	2900	2950	2950	2950	2950	2950		
										(8.3)	(8.8)	12	20	25	30	33	36	39	41	43	45	46	48	49	51	52		
10													2700	2450	2400	2350	2350	2350	2400	2400	2450	2500	2500	2550	2600			
												(9.3)	(9.8)	12	19	25	29	32	35	37	40	42	43	45	47	48		
11														2250	2050	2000	2000	2000	2050	2050	2100	2150	2200	2200	2250			
														(10.3)	(10.8)	12	19	24	28	31	34	36	38	40	42	44		
12																1900	1750	1700	1750	1750	1800	1850	1850	1900	1900	1950		
																(11.3)	(11.8)	12	18	23	27	30	33	35	37	40		
13																		1600	1550	1500	1550	1600	1600	1650	1650	1700		
																		(12.3)	11	18	22	26	29	32	35			
14																			1450	1350	1350	1400	1400	1400	1450	1500		
																			(13.3)	(13.8)	11	17	22	25	29			
15																						1300	1250	1250	1300			
																						(14.3)	(14.8)	10	17	22		
16.45																									1200	1100	1050	
																									(15.3)	(15.8)	(16.5)	

MAC-25 3m FLYJIB TOP POSITION AT 0 DEG OFFSET LOAD CHART  
COUNTERWEIGHT ON FRONT OF CRANE - SPRING LOCKOUTS ENGAGED

LMI DUTY **105**

PIVOT TO FLY JIB MAX LENGTH 21.4m		
MAX RADIUS		SWL
6.10		1500
		65
7.76		1500
		60
9.34		1200
		55
10.83		1200
		50
12.22		970
		45
13.49		970
		40
14.65		850
		35
15.67		850
		30
16.55		770
		25
17.29		770
		20
17.88		750
		15
18.31		750
		10
18.58		750
		5
18.69		750
		0

 S.W.L IN KILOGRAMS FOR SLEW ANGLES UP TO 40 DEGREES EITHER SIDE OF STRAIGHT AHEAD (INDICATED BY RED LED ON DASH).  
 BOOM ANGLE - UNDEFLECTED (REF.)  
NOTE: VALUES IN BRACKETS ( ) ARE ACTUAL RADIUS AT ZERO DEG. BOOM ANGLE.  
SWL IS AT THIS RADIUS

SPRING LOCKOUTS ARE TO BE ENGAGED FOR ALL LIFTING OPERATIONS

S.W.L. ARE BASED ON 66.6% STABILITY & STRENGTH  
ALL FLYJIB S.W.L.'S ARE STRUCTURAL  
S.W.L. ARE BASED ON FIRM LEVEL GROUND (1% SLOPE (0.6 DEG) AS PER AS1418.5)  
WITH TYRES INFLATED AS PER NOTES  
LIFT & CARRY - THE S.W.L. SHALL BE CARRIED WITH THE MINIMUM BOOM LENGTH & AS CLOSE TO THE GROUND AS POSSIBLE AT SPEEDS NOT IN EXCESS OF 0.4 M/SEC (1.44 KM/HR)

FLYJIB S.W.L.'S AND RADII ARE BASED ON FULLY EXTENDED BOOM.  
FOR OPERATION THE BOOM PART OR FULLY RETRACTED  
THE SWL WILL BE BASED ON THE BOOM ANGLE. NOT THE ACTUAL RADIUS.

NOTE : WEIGHT OF HOOKS, BLOCKS & OTHER  
LOAD HANDLING DEVICES SHALL BE ADDED  
TO THE WEIGHT OF THE LOAD

MAC-25 3m FLYJIB TOP POSITION AT 12.5 DEG OFFSET LOAD CHART

COUNTERWEIGHT ON FRONT OF CRANE - SPRING LOCKOUTS ENGAGED

LMI DUTY

106

PIVOT TO FLY JIB MAX LENGTH 21.4m	
MAX RADIUS	SWL
6.60	1300
	65
8.23	1300
	60
9.78	1120
	55
11.24	1120
	50
12.59	920
	45
13.83	920
	40
14.94	820
	35
15.92	820
	30
16.76	770
	25
17.45	770
	20
17.99	750
	15
18.37	750
	10
18.59	750
	5
18.65	750
	0



S W L IN KILOGRAMS FOR SLEW ANGLES UP TO 40  
DEGREES EITHER SIDE OF STRAIGHT AHEAD (INDICATED BY RED LED ON DASH):  
BOOM ANGLE - UNDEFLECTED (REF.)



NOTE: VALUES IN BRACKETS ( ) ARE ACTUAL RADIUS AT ZERO DEG BOOM ANGLE.  
SWL IS AT THIS RADIUS

SPRING LOCKOUTS ARE TO BE ENGAGED FOR ALL LIFTING OPERATIONS

S W L ARE BASED ON 66.6% STABILITY & STRENGTH

ALL FLYJIB S W L'S ARE STRUCTURAL

S W L ARE BASED ON FIRM LEVEL GROUND (1% SLOPE (0.6 DEG) AS PER AS1418.5)

WITH TYRES INFLATED AS PER NOTES

LIFT & CARRY - THE S W L SHALL BE CARRIED WITH THE MINIMUM BOOM LENGTH & AS

CLOSE TO THE GROUND AS POSSIBLE AT SPEEDS NOT IN EXCESS OF 0.4 M/SEC (1.44 KM/HR)

FLYJIB S W L'S AND RADII ARE BASED ON FULLY EXTENDED BOOM.

FOR OPERATION WITH THE BOOM PART OR FULLY RETRACTED

THE SWL WILL BE BASED ON THE BOOM ANGLE, NOT THE ACTUAL RADIUS.

NOTE :WEIGHT OF HOOKS, BLOCKS & OTHER  
LOAD HANDLING DEVICES SHALL BE ADDED  
TO THE WEIGHT OF THE LOAD

MAC-25 4m FLYJIB TOP POSITION AT 5 DEG OFFSET LOAD CHART  
COUNTERWEIGHT ON FRONT OF CRANE - SPRING LOCKOUTS ENGAGED

LMI DUTY 107

PIVOT TO FLY JIB		
MAX	MAX LENGTH 22.48m	
RADIUS	SWL	
6.85	700	
	65	
8.58	600	
	60	
10.23	600	
	55	
11.77	600	
	50	
13.21	600	
	45	
14.53	500	
	40	
15.72	500	
	35	
16.77	500	
	30	
17.67	500	
	25	
18.42	500	
	20	
19.00	500	
	15	
19.43	500	
	10	
19.68	500	
	5	
19.77	500	
	0	

S.W.L IN KILOGRAMS FOR SLEW ANGLES UP TO 40 DEGREES EITHER SIDE OF STRAIGHT AHEAD (INDICATED BY RED LED ON DASH).

BOOM ANGLE - UNDEFLECTED (REF.)

NOTE: VALUES IN BRACKETS ( ) ARE ACTUAL RADIUS AT ZERO DEG. BOOM ANGLE.  
SWL IS AT THIS RADIUS

SPRING LOCKOUTS ARE TO BE ENGAGED FOR ALL LIFTING OPERATIONS

S.W.L. ARE BASED ON 66.6% STABILITY & STRENGTH  
ALL FLYJIB S.W.L.'S ARE STRUCTURAL  
S.W.L. ARE BASED ON FIRM LEVEL GROUND (1% SLOPE (0.6 DEG) AS PER AS1418.5)  
WITH TYRES INFLATED AS PER NOTES  
LIFT & CARRY - THE S.W.L. SHALL BE CARRIED WITH THE MINIMUM BOOM LENGTH & AS CLOSE TO THE GROUND AS POSSIBLE AT SPEEDS NOT IN EXCESS OF 0.4 M/SEC (1.44 KM/HR)

FLYJIB S.W.L.'S AND RADII ARE BASED ON FULLY EXTENDED BOOM.  
FOR OPERATION THE BOOM PART OR FULLY RETRACTED  
THE SWL WILL BE BASED ON THE BOOM ANGLE, NOT THE ACTUAL RADIUS.

NOTE : WEIGHT OF HOOKS, BLOCKS & OTHER  
LOAD HANDLING DEVICES SHALL BE ADDED  
TO THE WEIGHT OF THE LOAD

MAC-25 4m FLYJIB BOTTOM POSITION AT 17.5 DEG OFFSET LOAD CHART  
COUNTERWEIGHT ON FRONT OF CRANE - SPRING LOCKOUTS ENGAGED

LMI DUTY **108**

PIVOT TO FLY JIB MAX LENGTH 22.41m		
MAX RADIUS		SWL
7.82		600
		65
9.50		600
		60
11.09		600
		55
12.57		500
		50
13.94		500
		45
15.18		500
		40
16.29		500
		35
17.25		500
		30
18.07		500
		25
18.72		500
		20
19.22		500
		15
19.55		500
		10
19.70		500
		5
19.70		500
		0

S.W.L IN KILOGRAMS FOR SLEW ANGLES UP TO 40 DEGREES EITHER SIDE OF STRAIGHT AHEAD (INDICATED BY RED LED ON DASH).

BOOM ANGLE - UNDEFLECTED (REF.)

NOTE: VALUES IN BRACKETS ( ) ARE ACTUAL RADIUS AT ZERO DEG. BOOM ANGLE.  
SWL IS AT THIS RADIUS

SPRING LOCKOUTS ARE TO BE ENGAGED FOR ALL LIFTING OPERATIONS

S.W.L. ARE BASED ON 66.6% STABILITY & STRENGTH  
ALL FLYJIB S.W.L.'S ARE STRUCTURAL  
S.W.L. ARE BASED ON FIRM LEVEL GROUND (1% SLOPE (0.6 DEG)/AS PER AS1418.5)  
WITH TYRES INFLATED AS PER NOTES  
LIFT & CARRY - THE S.W.L. SHALL BE CARRIED WITH THE MINIMUM BOOM LENGTH & AS CLOSE TO THE GROUND AS POSSIBLE AT SPEEDS NOT IN EXCESS OF 0.4 M/SEC (1.44 KM/HR)

FLYJIB S.W.L.'S AND RADII ARE BASED ON FULLY EXTENDED BOOM.  
FOR OPERATION WITH THE BOOM PART OR FULLY RETRACTED  
THE SWL WILL BE BASED ON THE BOOM ANGLE. NOT THE ACTUAL RADIUS.

NOTE : WEIGHT OF HOOKS, BLOCKS & OTHER  
LOAD HANDLING DEVICES SHALL BE ADDED  
TO THE WEIGHT OF THE LOAD

**MAC-25 MAN BASKET LOAD CHART**  
**COUNTERWEIGHT ON FRONT OF CRANE - SPRING LOCKOUTS ENGAGED**

LMI DUTY

**[109]**

**MAXIMUM MANBASKET SWL: 275 KG (SEE NOTE BELOW)**  
**BASKET WEIGHT: 225 KG**

*Read and understand warning notes before  
operating crane*

**NOTE: THE TOTAL WEIGHT OF THE MANBASKET PLUS  
MEN AND EQUIPMENT IS NOT TO EXCEED 1/3 OF  
THE SAFE WORKING LOAD AS READ ON LOAD  
CHART (FALL BLOCK LOAD CHART - DUTY 101)  
FOR THE BOOM LENGTH AND RADIUS BEING USED.**

MAC-25 BUTT LUG - 10 DEG. ART.

COUNTERWEIGHT ON FRONT OF CRANE - SPRING LOCKOUTS ENGAGED



S.W.L IN KILOGRAMS FOR SLEW ANGLES OF 10 DEGREES OR LESS EITHER SIDE OF STRAIGHT AHEAD (INDICATED BY GREEN LED ON DASH).



BOOM ANGLE - UNDEFLECTED (REF.)

NOTE : VALUES IN BRACKETS ( ) ARE ACTUAL RADIUS AT ZERO DEG. BOOM ANGLE.

SWL IS AT THIS RADIUS

S.W.L. ARE BASED ON 66.7% STABILITY & STRENGTH - S.W.L. ABOVE BOLD RED LINE ARE STRUCTURAL

S.W.L. ARE BASED ON FIRM, LEVEL GROUND (1% SLOPE (0.6 DEG) AS PER AS1418.5) WITH TYRES INFLATED AS PER NOTES

LIFT & CARRY - THE S.W.L. SHALL BE CARRIED WITH THE MINIMUM BOOM LENGTH & AS CLOSE TO THE GROUND AS POSSIBLE AT SPEEDS NOT IN EXCESS OF 0.4 M/SEC (1.44 KM/HR)

NOTE : WEIGHT OF HOOKS, BLOCKS & OTHER LOAD HANDLING DEVICES SHALL BE ADDED TO THE WEIGHT OF THE LOAD

Radius in Metres	Boom Length (metres)
1.4	23550
	32
1.5	23100
	30
1.6	22700
	27
1.7	22300
	24
1.8	21400
	21
1.9	20150
	18
2.1	17950
	0

NOTE : WEIGHT OF HOOKS, BLOCKS & OTHER  
LOAD HANDLING DEVICES SHALL BE ADDED  
TO THE WEIGHT OF THE LOAD

LMI DUTY

110

MAC-25 BUTT LUG - 40 DEG. ART.

COUNTERWEIGHT ON FRONT OF CRANE - SPRING LOCKOUTS ENGAGED



S.W.L IN KILOGRAMS FOR SLEW ANGLES OF GREATER THAN 10 DEGREES UP TO 40 DEGREES EITHER SIDE OF STRAIGHT AHEAD (INDICATED BY RED LED ON DASH).



BOOM ANGLE - UNDEFLECTED (REF.)

NOTE : VALUES IN BRACKETS ( ) ARE ACTUAL RADIUS AT ZERO DEG. BOOM ANGLE.

SWL IS AT THIS RADIUS

Radius in Metres	Boom Length (metres)
1.4	23550
	32
1.5	23100
	30
1.6	21700
	27
1.7	20300
	24
1.8	19100
	21
1.9	17950
	18
2.1	15950
	0



MAC25 LUG 1 LOAD CHART - 10 DEG. ART.  
COUNTERWEIGHT ON FRONT OF CRANE - SPRING LOCKOUTS ENGAGED

S.W.L IN KILOGRAMS FOR SLEW ANGLES OF 10 DEGREES OR LESS EITHER  
SIDE OF STRAIGHT AHEAD (INDICATED BY GREEN LED ON DASH).  
BOOM ANGLE - UNDEFLECTED (REF.)  
NOTE: VALUES IN BRACKETS ( ) ARE ACTUAL RADIUS AT ZERO DEG. BOOM ANGLE.  
SWL IS AT THIS RADIUS

MAC25 LUG 1 LOAD CHART - 40 DEG. ART.  
COUNTERWEIGHT ON FRONT OF CRANE - SPRING LOCKOUTS ENGAGED

S.W.L IN KILOGRAMS FOR SLEW ANGLES OF GREATER THAN 10 DEGREES UP TO 40  
DEGREES EITHER SIDE OF STRAIGHT AHEAD (INDICATED BY RED LED ON DASH).  
BOOM ANGLE - UNDEFLECTED (REF.)  
NOTE: VALUES IN BRACKETS ( ) ARE ACTUAL RADIUS AT ZERO DEG. BOOM ANGLE.  
SWL IS AT THIS RADIUS

S.W.L. ARE BASED ON 66.7% STABILITY & STRENGTH - S.W.L. ABOVE BOLD RED LINE ARE STRUCTURAL  
S.W.L. ARE BASED ON FIRM, LEVEL GROUND (1% SLOPE (0.6 DEG) AS PER AS1418.5) WITH TYRES INFLATED AS PER NOTES  
LIFT & CARRY - THE S.W.L. SHALL BE CARRIED WITH THE MINIMUM BOOM LENGTH & AS CLOSE TO THE GROUND AS POSSIBLE AT SPEEDS NOT IN EXCESS OF 0.4 M/SEC (1.44 KM/HR)  
NOTE : WEIGHT OF HOOKS, BLOCKS & OTHER LOAD HANDLING DEVICES SHALL BE ADDED TO THE WEIGHT OF THE LOAD

RADIUS IN METRES	BOOM PIV/OT TO LUG 1, 1st EXTENSION, THIRD EXTENSION RETRACTED (metres)												
	5.36	5.50	6.00	6.50	7.00	7.50	8.00	8.50	9.00	9.46			
1.4	24350	24300	24100	23950	23750	23600	23450	23250	23100	22950			
	40	42	47	51	54	57	59	61	63	64			
2	19500	19400	19100	18850	18600	18400	18200	18000	17900	17750			
	29	31	38	44	48	51	54	56	59	60			
2.5	15250	15200	14950	14700	14500	14300	14150	14000	13850	13750			
	14	19	30	37	42	46	49	52	55	57			
3	14200	13350	12100	11950	11750	11600	11450	11300	11200	11100			
	(2.7)	(2.8)	18	29	35	41	45	48	51	53			
3.5			10800	9950	9800	9650	9500	9400	9300	9200			
			(3.3)	17	28	34	39	43	46	49			
4				8900	8300	8150	8050	7950	7850	7750			
				(3.8)	17	27	33	38	42	45			
5					7500	6350	6000	5900	5800	5750			
					(4.3)	16	25	31	36				
6							5400	4650	4450	4400			
							(5.3)	(5.8)	15	23			
6.8									4000	3500			
									(6.3)	(6.8)			

# MAC-25 LUG 2 LOAD CHART - 10 DEG. ART.

## COUNTERWEIGHT ON FRONT OF CRANE - SPRING LOCKOUTS ENGAGED

S.W.L IN KILOGRAMS FOR SLEW ANGLES OF 10 DEGREES OR LESS EITHER

SIDE OF STRAIGHT AHEAD (INDICATED BY GREEN LED ON DASH).

BOOM ANGLE - UNDEFLECTED (REF.)

S.W.L. ARE BASED ON 66.7% STABILITY & STRENGTH

- S.W.L. ABOVE BOLD RED LINE ARE STRUCTURAL

S.W.L. ARE BASED ON FIRM LEVEL GROUND (1% SLOPE (0.6 DEG)

NOTE: VALUES IN BRACKETS ( ) ARE ACTUAL RADIUS AT ZERO DEG. BOOM ANGLE.

AS PER AS1418.5) WITH TYRES INFLATED AS PER NOTES

### ENSURE WINCH ROPE IS FULLY TENSIONED

LIFT & CARRY - THE S.W.L. SHALL BE CARRIED WITH THE MIN BOOM LENGTH & AS CLOSE TO THE GROUND AS POSSIBLE AT SPEEDS NOT IN EXCESS OF 0.4 M/SEC (1.44 KM/HR)

Radius in Metres		BOOM PIVOT TO LUG 2, 2nd EXTENSION, THIRD EXTENSION RETRACTED (metres)																	
		5.57	6.00	6.50	7.00	7.50	8.00	8.50	9.00	9.50	10.00	10.50	11.00	11.50	12.00	12.50	13.00	13.50	13.77
1.4	24550	24500	24450	24400	24350	24300	24200	24150	24100										
	42	46	50	54	57	59	61	63	64										
2	19650	19600	19600	19550	19550	19500	19500	19450	19450	19450	19400	19400	19400	19400					
2.5	32	38	43	47	51	54	56	58	60	62	63	64							
	15400	15400	15350	15350	15350	15300	15300	15300	15250	15250	15250	15200	15200	15200					
3	20	29	36	42	46	49	52	54	57	58	60	62	63	64					
	13150	12550	12550	12500	12500	12500	12450	12450	12450	12450	12400	12400	12400	12400	12200				
3.5	13	18	28	35	40	44	48	50	53	55	57	59	60	61	63				
	13150	11200	10500	10550	10500	10500	10500	10500	10450	10450	10450	10450	10450	10400	10400	10400	10400	10400	10400
4	(2.9)																		
			9500	9000	9000	9000	9000	9000	8950	8950	8950	8950	8950	8950	8900	8900	8900	8900	8900
5				16	26	33	38	42	45	48	50	52	54	56	57	59	60	61	61
				8200	7150	6850	6900	6900	6850	6850	6850	6850	6850	6850	6850	6850	6800	6800	6800
6				(4.3)	(4.8)	15	25	31	36	39	43	45	48	50	52	53	55	56	56
						6350	5650	5450	5450	5450	5450	5450	5450	5450	5450	5450	5450	5400	5400
7						(5.3)	(5.8)	14	23	29	34	37	41	43	46	48	50	51	51
								5050	4550	4450	4450	4450	4450	4450	4450	4450	4450	4450	4450
8								(6.3)	(6.8)	14	22	28	32	36	39	42	44	45	45
										4150	3750	3700	3700	3700	3700	3700	3700	3700	3700
9										(7.3)	(7.8)	13	21	27	31	34	37	39	39
												3400	3150	3100	3100	3100	3100	3100	3100
10												(8.3)	(8.8)	12	20	26	30	32	32
														2850	2650	2600	2600	2600	2600
11														(9.3)	(9.8)	12	19	23	23
																2400	2250	2200	2200
11.1																(10.3)	(10.8)	6	6
																		2150	2150
																			(11.1)

NOTE : WEIGHT OF HOOKS, BLOCKS & OTHER  
LOAD HANDLING DEVICES SHALL BE ADDED  
TO THE WEIGHT OF THE LOAD

MAC-25 LUG 2 LOAD CHART - 40 DEG. ART.  
COUNTERWEIGHT ON FRONT OF CRANE - SPRING LOCKOUTS ENGAGED

LMI DUTY [112]

S.W.L IN KILOGRAMS FOR SLEW ANGLES OF GREATER THAN 10 DEGREES UP TO 40

S.W.L. ARE BASED ON 66.7% STABILITY & STRENGTH

DEGREES EITHER SIDE OF STRAIGHT AHEAD (INDICATED BY RED LED ON DASH).

- S.W.L. ABOVE BOLD RED LINE ARE STRUCTURAL

BOOM ANGLE - UNDEFLECTED (REF.)

S.W.L. ARE BASED ON FIRM LEVEL GROUND (1% SLOPE (0.6

NOTE: VALUES IN BRACKETS ( ) ARE ACTUAL RADIUS AT ZERO DEG. BOOM ANGLE.

DEG) AS PER AS'14(18.5) WITH TYRES INFLATED AS PER NOTES

ENSURE WINCH ROPE IS FULLY TENSIONED

LIFT & CARRY - THE S.W.L. SHALL BE CARRIED WITH THE MIN BOOM LENGTH & AS CLOSE  
TO THE GROUND AS POSSIBLE AT SPEEDS NOT IN EXCESS OF 0.4 M/SEC (1.44 KM/HR)

Radius in Metres	BOOM PIVOT TO LUG 2, 2nd EXTENSION, THIRD EXTENSION RETRACTED (METRES) (metres)																		
	5.57	6.00	6.50	7.00	7.50	8.00	8.50	9.00	9.50	10.00	10.50	11.00	11.50	12.00	12.50	13.00	13.50	13.77	
1.4	24550 42	23850 46	22150 50	18400 54	17000 57	15850 59	14900 61	14100 63	13350 64										
2	17550 32	17550 38	17500 43	17500 47	16550 51	14050 54	13800 56	12950 58	12250 60	11650 62	11100 63	10600 64							
2.5	13700 20	13700 29	13700 36	13700 42	13650 46	13650 49	13200 52	12600 54	12100 57	11650 58	10300 60	9850 62	9450 63	9050 64					
3	11700 12	11150 18	11150 28	11150 35	11100 40	11100 44	10800 48	10350 50	10000 53	9650 55	9350 57	8400 59	8100 60	7800 61	7550 63				
3.5	11700 (2.9)	9950 (3.3)	9350 17	9350 27	9350 34	9300 39	9300 43	9300 46	9300 49	9250 51	9000 54	8700 55	8450 57	8200 59	7950 60	7250 61	7000 62	6850 63	
4			8400 (3.8)	7950 16	7950 26	7950 33	7950 38	7950 42	7950 45	7900 48	7900 50	7900 52	7650 54	7400 56	7200 57	7000 59	6850 60	6750 61	
5				7250 (4.3)	6300 (4.8)	6050 15	6050 25	6050 31	6050 36	6050 39	6050 43	6000 45	6000 48	6000 50	6000 52	5850 53	5700 55	5650 56	
6						5550 (5.3)	4900 (5.8)	4750 14	4750 23	4750 29	4750 34	4750 37	4750 41	4750 43	4750 46	4750 48	4750 50	4750 51	
7								4400 (6.3)	3950 (6.8)	3850 14	3850 22	3850 28	3850 32	3850 36	3850 39	3850 42	3850 44	3850 45	
8										3550 (7.3)	3200 (7.8)	3150 13	3150 21	3150 27	3150 31	3150 34	3150 37	3150 39	
9												2900 (8.3)	2650 (8.8)	2650 12	2650 20	2650 26	2650 30	2650 32	
10																			
11																			
11.1																			

MAC-25 FALL BLOCK LOAD CHART - 10 DEG. ART.  
COUNTERWEIGHT ON REAR OF CRANE - SPRING LOCKOUTS ENGAGED

S.W.L IN KILOGRAMS FOR SLEW ANGLES OF 10 DEGREES OR LESS EITHER  
SIDE OF STRAIGHT AHEAD (INDICATED BY GREEN LED ON DASH).  
BOOM ANGLE - UNDEFLECTED (REF.)

NOTE : VALUES IN BRACKETS ( ) ARE ACTUAL RADIUS AT ZERO DEG. BOOM ANGLE.

LMI DUTY

201

S.W.L. ARE BASED ON 66.7% STABILITY & STRENGTH  
- S.W.L. ABOVE BOLD RED LINE ARE STRUCTURAL  
S.W.L. ARE BASED ON FIRM LEVEL GROUND (1% SLOPE (0.6 DEG) AS PER AS1418.5)  
WITH TYRES INFLATED AS PER NOTES  
LIFT & CARRY - THE S.W.L. SHALL BE CARRIED WITH THE MINIMUM BOOM LENGTH & AS  
CLOSE TO THE GROUND AS POSSIBLE AT SPEEDS NOT IN EXCESS OF 0.4 M/SEC (1.44 KM/HR)

Radius in Metres	BOOM PIVOT TO HEAD SHEAVES - THIRD BOOM RETRACTED (metres)																	THIRD BOOM EXTENDING (metres)											
	6.12	6.50	7.00	7.50	8.00	8.50	9.00	9.50	10.00	10.50	11.00	11.50	12.00	12.50	13.00	13.50	14.32	14.50	15.00	15.50	16.00	16.50	17.00	17.50	18.00	18.42			
1.4	25000 48	25000 51	25000 54	25000 57	25000 59	25000 61	25000 63	25000 65																					
2.0	23000 40	22950 44	22850 48	22950 51	22900 54	22850 57	22850 59	22800 61	22800 62	22150 64	19300 65												WINCH S.W.L. SINGLE PART 4200 TWO PARTS 8400 FOUR PARTS 16800 SIX PARTS 25000						
2.5	18200 32	18150 37	18150 42	18100 46	18050 50	18000 52	18000 55	17950 57	17950 59	17900 61	17750 62	15550 63	14600 65																
3.0	14900 21	14900 29	14900 35	14850 41	14800 45	14800 51	14750 53	14750 55	14700 57	14700 59	14700 61	14350 62	13500 63	13000 64	12600 65	12250 65													
3.5	12900 (3.4)	12550 17	12550 28	12500 34	12500 39	12500 43	12450 47	12450 49	12400 52	12400 54	12400 56	12350 58	12350 59	12150 61	11750 62	11400 63	10850 65	10750 65											
4.0		11450 (3.8)	10800 17	10750 27	10750 33	10750 38	10700 42	10700 45	10700 48	10650 51	10650 53	10650 55	10600 56	10600 58	10600 59	10600 61	10100 62	10050 63	9850 64	9650 65									
5.0			9900 (4.3)	8700 (4.8)	8300 16	8300 25	8300 31	8250 36	8250 40	8250 43	8250 46	8200 48	8200 50	8200 52	8200 54	8150 56	8200 58	8200 59	8250 61	8300 62	8300 63	8250 64	8150 65	8000 65	7900 65				
6.0					7700 (5.3)	6900 (5.8)	6650 15	6650 24	6650 30	6600 34	6600 38	6600 41	6600 44	6600 46	6600 48	6550 50	6550 53	6550 55	6600 56	6650 57	6700 58	6750 58	6800 60	6800 61	6850 62				
7.0							6250 (6.3)	5650 (6.8)	5450 (7.3)	5450 (7.8)	5450 14	5450 23	5450 28	5450 33	5450 36	5400 39	5400 42	5400 44	5400 48	5450 50	5500 52	5550 53	5600 54	5650 56	5700 58				
8.0										5150 (7.3)	4700 (7.8)	4550 13	4550 22	4550 27	4550 31	4550 35	4550 38	4550 42	4550 43	4600 45	4650 47	4700 48	4750 50	4800 51	4800 53	4800 55			
9.0												4350 (8.3)	4000 (8.8)	3900 13	3900 21	3900 26	3900 30	3850 35	3900 36	3950 39	4000 41	4050 43	4100 44	4150 45	4150 47	4150 51			
10														3700 (9.3)	3400 (9.8)	3350 12	3350 20	3350 28	3350 29	3400 32	3450 35	3500 38	3550 40	3550 42	3600 44	3600 45			
11																3200 (10.3)	2950 (10.8)	2900 17	2900 19	3000 24	3050 28	3100 31	3150 34	3150 37	3150 39	3150 41	3150 42		
12									NOTE : WEIGHT OF HOOKS, BLOCKS & OTHER LOAD HANDLING DEVICES SHALL BE ADDED TO THE WEIGHT OF THE LOAD										2650 (11.6)	2600 (11.8)	2550 12	2600 19	2650 23	2700 27	2750 30	2750 33	2800 36	2800 37	
13																			2450 (12.3)	2350 (12.8)	2300 11	2400 18	2450 23	2450 27	2450 30	2450 32			
14																					2200 (13.3)	2100 (13.8)	2150 11	2150 18	2150 22	2150 25	2200 25		
15																							2050 (14.3)	1950 (14.8)	1950 10	1950 16	1950 16		
15.71																									1850 (15.3)	1800 (15.7)			

MAC-25 FALL BLOCK LOAD CHART - 40 DEG. ART.  
COUNTERWEIGHT ON REAR OF CRANE - SPRING LOCKOUTS ENGAGED

S.W.L IN KILOGRAMS FOR SLEW ANGLES OF GREATER THAN 10 DEGREES UP TO 40 DEGREES EITHER SIDE OF STRAIGHT AHEAD (INDICATED BY RED LED ON DASH).  
BOOM ANGLE - UNDEFLECTED (REF.)

LMI DUTY

201

S.W.L. ARE BASED ON 66.7% STABILITY & STRENGTH  
- S.W.L. ABOVE BOLD RED LINE ARE STRUCTURAL  
S.W.L. ARE BASED ON FIRM LEVEL GROUND (1% SLOPE (0.6 DEG) AS PER AS(1418.5)  
WITH TYRES INFLATED AS PER NOTES  
LIFT & CARRY - THE S.W.L. SHALL BE CARRIED WITH THE MINIMUM BOOM LENGTH & AS CLOSE TO THE GROUND AS POSSIBLE AT SPEEDS NOT IN EXCESS OF 0.4 M/SEC (1.44 KM/HR)

NOTE : VALUES IN BRACKETS ( ) ARE ACTUAL RADIUS AT ZERO DEG. BOOM ANGLE.

Radius in Metres	BOOM PIVOT TO HEAD SHEAVES - THIRD BOOM RETRACTED (metres)																	THIRD BOOM EXTENDING (metres)									
	6.12	6.50	7.00	7.50	8.00	8.50	9.00	9.50	10.00	10.50	11.00	11.50	12.00	12.50	13.00	13.50	14.32	14.50	15.00	15.50	16.00	16.50	17.00	17.50	18.00	18.42	
1.4	21750 48	20200 51	18550 54	17250 57	16150 59	15200 61	14400 63	13700 65																			
2.0	19850 40	18700 44	17500 48	16150 51	15000 54	14100 57	13300 59	12600 61	12000 62	11450 64	10950 65												WINCH S.W.L. SINGLE PART 4200 TWO PARTS 8400 FOUR PARTS 16800 SIX PARTS 25000				
2.5	16250 32	16250 37	15600 42	14700 46	13900 50	13200 52	12400 55	11750 57	11150 59	10650 61	10200 62	9800 63	9400 65														
3.0	13300 21	13300 29	13250 35	13250 41	12500 45	11900 48	11400 51	10900 53	10400 55	9900 57	9500 59	9100 61	8750 62	8450 63	8150 64	7850 65											
3.5	11450 (3.4)	11150 17	11150 28	11150 34	11100 39	10800 43	10300 47	9900 49	9500 52	9200 54	8800 56	8450 58	8150 59	7850 61	7600 62	7350 63	6950 65	6900 65									
4.0		10150 (3.8)	9550 17	9550 27	9550 33	9550 38	9400 42	9000 45	8650 48	8350 51	8100 53	7850 55	7550 56	7300 58	7050 59	6850 61	6500 62	6450 63	6300 64	6150 65							
5.0			8750 (4.3)	7700 (4.8)	7350 16	7300 25	7300 31	7300 36	7300 40	7100 43	6850 46	6600 48	6400 50	6250 52	6100 54	5950 56	5650 58	5600 58	5500 59	5400 61	5300 62	5200 63	5100 64	5050 65	4950 65		
6.0					6800 (5.3)	6100 (5.8)	5850 15	5850 24	5800 30	5800 34	5800 38	5700 41	5550 44	5350 46	5200 48	5100 50	4900 53	4850 53	4800 55	4750 56	4650 57	4600 58	4550 60	4450 61	4400 61	4350 62	
7.0							5450 (6.3)	4950 (6.8)	4750 14	4750 23	4750 28	4750 33	4750 36	4700 39	4550 42	4450 44	4250 48	4250 48	4200 50	4150 52	4100 53	4050 54	4000 56	3950 57	3900 58	3850 59	
8.0									4500 (7.3)	4100 (7.8)	3950 13	3950 22	3950 27	3950 31	3950 35	3900 38	3750 42	3750 43	3700 45	3650 47	3600 48	3550 50	3500 51	3500 53	3500 54	3450 55	
9.0											3750 (8.3)	3450 (8.8)	3350 13	3350 21	3350 26	3350 30	3350 35	3350 36	3300 39	3250 41	3200 43	3200 45	3150 47	3150 48	3100 50	3100 51	
10													3150 (9.3)	2950 (9.8)	2850 12	2850 20	2850 28	2850 29	2900 32	2900 35	2900 38	2850 40	2850 42	2800 44	2750 45		
11															2700 (10.3)	2500 (10.8)	2450 17	2450 19	2500 24	2550 28	2550 31	2600 34	2550 37	2500 39	2500 41	2500 42	
12																	2200 (11.6)	2150 (11.8)	2150 2050	2200 1950	2250 2000	2250 2050	2300 2050	2300 2050	2300 2100	2300 2100	
13																			(12.3)	11 (12.8)	18 (12.8)	23 (12.8)	27 (12.8)	30 (12.8)	32 (12.8)	32 (12.8)	
14																					1850 (13.3)	1750 (13.8)	1800 (13.8)	1800 11	1800 18	1850 22	
15																							1700 (14.3)	1600 (14.8)	1600 (14.8)	1650 10	
15.71																									1550 (15.3)	1500 (15.7)	

1885

1509

202

LIFT & CARRY - THE S.W.L. SHALL BE CARRIED WITH THE MINIMUM BOOM LENGTH & AS CLOSE TO THE GROUND AS POSSIBLE AT SPEEDS NOT IN EXCESS OF 0.4 M/SEC (1.44 KM/HR)

Radius in Metres	BOOM PIVOT TO HOOK CENTRE - THIRD BOOM RETRACTED (metres)																		THIRD BOOM EXTENDING (metres)								
	6.45	7.00	7.50	8.00	8.50	9.00	9.50	10.00	10.50	11.00	11.50	12.00	12.50	13.00	13.50	14.00	14.65	15.00	15.50	16.00	16.50	17.00	17.50	18.00	18.50	18.75	
1.4	15000	15000	15000	15000	15000	15000	15000																				
	51	55	58	60	62	64	65																				
2.0	15000	15000	15000	15000	15000	15000	15000	15000	15000	15000																	
	44	49	52	55	57	59	61	63	64	65																	
2.5	15000	15000	15000	15000	15000	15000	15000	15000	15000	15000	15000	14200															
	37	43	47	50	53	56	58	59	61	63	64	65															
3.0	15000	15000	15000	15000	14950	14900	14850	14850	14850	14800	14800	13200	12750	12300													
	29	36	41	45	49	52	54	56	58	60	61	62	64	65													
3.5	12700	12700	12650	12650	12600	12550	12550	12550	12500	12500	12500	12300	11850	11450	11150	10800											
	17	29	35	40	44	47	50	52	55	56	58	60	61	62	63	64											
4.0	11750	10900	10900	10900	10850	10850	10800	10800	10800	10750	10750	10700	10700	10400	10100	9750											
	(3.7)	18	28	34	39	43	46	49	51	53	55	57	58	60	61	62	63	64	65	9600	9450						
5.0		10050	8800	8400	8400	8350	8350	8350	8350	8300	8300	8300	8250	8250	8250	8250	8250	8250	8300	8200	8050	7900	7800	7700			
		(4.3)	(4.8)	16	26	32	37	40	44	46	49	51	53	54	56	57	59	60	61	62	63	64	65	65			
6.0				7800	7000	6750	6700	6700	6700	6700	6700	6650	6650	6650	6650	6650	6600	6650	6700	6700	6750	6800	6800	6850	6800	6650	
				(5.3)		15	24	30	35	38	42	44	47	49	51	52	54	55	57	58	59	60	61	62	63	63	
7.0							6300	5750	5550	5500	5500	5500	5500	5500	5500	5450	5450	5500	5550	5550	5600	5650	5650	5700	5700	5700	
							(6.3)	(6.8)	15	23	29	33	37	40	42	45	47	49	50	52	53	55	56	57	58	59	
8.0									5200	4800	4650	4650	4650	4600	4600	4600	4600	4600	4650	4700	4700	4750	4800	4800	4850	4850	
									(7.3)	(7.8)	14	22	28	32	35	38	41	44	45	47	49	50	52	53	54	55	
9.0										4400	4050	3950	3950	3950	3950	3900	3900	3950	4000	4000	4050	4050	4100	4150	4150	4150	
										(8.3)	(8.8)	13	21	27	31	34	38	39	42	44	46	47	49	50	51	52	
10												3750	3450	3350	3350	3350	3350	3400	3450	3450	3500	3550	3600	3600	3600		
												(9.3)	(9.8)	13	20	26	31	33	36	38	40	42	44	46	47	48	
11															3200	3000	2900	2950	3000	3000	3050	3100	3100	3150	3150	3150	
															(10.3)	(10.8)	12	21	25	29	32	35	37	39	41	43	
12																2800	2550	2550	2600	2650	2700	2700	2750	2800	2800	2800	
																(11.3)	(11.9)	12	19	24	28	31	34	36	38	39	
13																		2450	2350	2300	2350	2400	2400	2450	2450	2500	
																		(12.3)	(12.8)	12	18	23	27	30	33	34	
14																				2200	2100	2100	2150	2200	2200	2200	
																				(13.3)	(13.8)	11	18	23	26	28	
15																						2000	1950	1950	1950	1950	
																							(14.3)	(14.8)	11	17	
16																									1850	1750	1750
																									(15.3)	(15.8)	(16.)

MAC-25 RHINO HOOK LOAD CHART - 40 DEG  
COUNTERWEIGHT ON REAR OF CRANE - SPRING LOCKOUTS ENGAGED

S.W.L IN KILOGRAMS FOR SLEW ANGLES OF GREATER THAN 10 DEGREES UP TO 40  
DEGREES EITHER SIDE OF STRAIGHT AHEAD (INDICATED BY RED LED ON DASH).

BOOM ANGLE - UNDEFLECTED (REF.)

NOTE : VALUES IN BRACKETS ( ) ARE ACTUAL RADIUS AT ZERO DEG. BOOM ANGLE.

LMI DUTY

202

S.W.L. ARE BASED ON 66.7% STABILITY & STRENGTH

- S.W.L. ABOVE BOLD RED LINE ARE STRUCTURAL

S.W.L. ARE BASED ON FIRM LEVEL GROUND (1% SLOPE (0.6 DEG) AS PER AS1418.5)

WITH TYRES INFLATED AS PER NOTES

LIFT & CARRY - THE S.W.L. SHALL BE CARRIED WITH THE MINIMUM BOOM LENGTH & AS

CLOSE TO THE GROUND AS POSSIBLE AT SPEEDS NOT IN EXCESS OF 0.4 M/SEC (1.44 KM/HR)

Radius in Metres	BOOM PIVOT TO HOOK CENTRE - THIRD BOOM RETRACTED (metres)																	THIRD BOOM EXTENDING (metres)									
	6.45	7.00	7.50	8.00	8.50	9.00	9.50	10.00	10.50	11.00	11.50	12.00	12.50	13.00	13.50	14.00	14.65	15.00	15.50	16.00	16.50	17.00	17.50	18.00	18.50	18.75	
1.4	15000	15000	15000	15000	15000	14500	13800																				
	51	55	58	60	62	64	65																				
2.0	15000	15000	15000	15000	14200	13400	12700	12100	11550	11050																	
	44	49	52	55	57	59	61	63	64	65																	
2.5	15000	15000	14850	14050	13300	12500	11850	11250	10750	10300	9850	9500															
	37	43	47	50	53	56	58	59	61	63	64	65															
3.0	13500	13450	13400	12650	12050	11500	11050	10500	10000	9550	9150	8800	8500	8200													
	29	36	41	45	49	52	54	56	58	60	61	62	64	65													
3.5	11350	11300	11300	11250	10900	10400	10000	9600	9300	8900	8550	8200	7900	7650	7400	7150											
	17	29	35	40	44	47	50	52	55	56	58	60	61	62	63	64											
4.0	10450	9700	9700	9700	9650	9500	9100	8750	8450	8200	7900	7650	7350	7100	6900	6650	6400	6300	6200								
	(3.7)	18	28	34	39	43	46	49	51	53	55	57	58	60	61	62	63	64	65								
5.0		8900	7800	7450	7400	7400	7400	7400	7150	6900	6700	6500	6300	6150	6000	5800	5600	5500	5400	5300	5200	5150	5050	4950			
		(4.3)	(4.8)	16	26	32	37	40	44	46	49	51	53	54	56	57	59	60	61	62	63	64	65	65			
6.0				6900	6150	5900	5900	5900	5900	5900	5750	5600	5450	5300	5150	5000	4850	4850	4750	4700	4600	4550	4450	4400	4350	4300	
				(5.3)	(5.8)	15	24	30	35	38	42	44	47	49	51	52	54	55	57	58	59	60	61	62	63	63	
7.0						5550	5000	4850	4850	4850	4800	4800	4750	4600	4500	4350	4250	4200	4150	4100	4050	4000	4000	3900	3850	3850	
						(6.3)	(6.8)	15	23	29	33	37	40	42	45	47	49	50	52	53	55	56	57	58	59	60	
8.0								4550	4150	4000	4000	4000	4000	4000	3950	3850	3750	3700	3650	3650	3600	3550	3500	3500	3450	3450	
								(7.3)	(7.8)	14	22	28	32	35	38	41	44	45	47	49	50	52	53	54	55	56	
9.0										3800	3500	3400	3400	3400	3400	3400	3300	3300	3250	3250	3200	3150	3150	3100	3100	3050	
										(8.3)	(8.8)	13	21	27	31	34	38	39	42	44	46	47	49	50	51	52	
10												3200	2950	2900	2900	2900	2900	2900	2950	2900	2850	2800	2800	2750	2750		
												(9.3)	(9.8)	13	20	26	31	33	36	38	40	42	44	46	47	48	
11														2750	2550	2450	2500	2500	2550	2600	2600	2550	2550	2500	2500		
														(10.3)	(10.8)	12	21	25	29	32	35	37	39	41	43	44	
12																2350	2150	2150	2200	2250	2300	2300	2300	2300	2250		
																(11.3)	(11.9)	12	19	24	28	31	34	36	38	39	
13																		2050	1950	1950	2000	2000	2050	2100	2100		
																	(12.3)	(12.8)	12	18	23	27	30	33	34		
14																			1850	1750	1750	1800	1800	1850	1850		
																			(13.3)	(13.8)	11	18	23	26	28		
15																					1700	1600	1600	1650	1650		
																					(14.3)	(14.8)	11	17	20		
16																								1550	1450	1450	
																								(15.3)	(15.8)	(16.)	

MAC-25 OFFSET HEAD BOTTOM POSITION LOAD CHART - 10 DEG

LMI DUTY

203

COUNTERWEIGHT ON REAR OF CRANE - SPRING LOCKOUTS ENGAGED  
S.W.L IN KILOGRAMS FOR SLEW ANGLES OF 10 DEGREES OR LESS EITHER  
SIDE OF STRAIGHT AHEAD (INDICATED BY GREEN LED ON DASH).  
BOOM ANGLE - UNDEFLECTED (REF.)  
NOTE : VALUES IN BRACKETS ( ) ARE ACTUAL RADIUS AT ZERO DEG. BOOM ANGLE.  
LIFT & CARRY - THE S.W.L. SHALL BE CARRIED WITH THE MINIMUM BOOM LENGTH & AS  
CLOSE TO THE GROUND AS POSSIBLE AT SPEEDS NOT IN EXCESS OF 0.4 M/SEC (1.44 KM/HR)

Radius in Metres	BOOM PIVOT TO EDGE OF SHEAVE - THIRD BOOM RETRACTED (metres)																			THIRD BOOM EXTENDING (metres)									
	6.86	7.00	7.50	8.00	8.50	9.00	9.50	10.00	10.50	11.00	11.50	12.00	12.50	13.00	13.50	14.00	14.50	15.06	15.50	16.00	16.50	17.00	17.50	18.00	18.50	19.16			
1.4	8400	8400	8400	8400	8400	8400	8400	8400	8400	8400	8400	8400	8400	8400	8400	8400	8400	8400	8400	8400	8400	8400	8400	8400	8400	8400	8400		
	55	56	59	61	63	65																							
2.0	8400	8400	8400	8400	8400	8400	8400	8400	8400	8400	8400	8400	8400	8400	8400	8400	8400	8400	8400	8400	8400	8400	WINCH S.W.L.						
	49	50	53	56	58	60	62	64	65													SINGLE PART		4200					
2.5	8400	8400	8400	8400	8400	8400	8400	8400	8400	8400	8400	8400	8400	8400	8400	8400	8400	8400	8400	8400	8400	TWO PARTS		8400					
	43	44	48	51	54	56	58	60	62	63	65																		
3.0	8400	8400	8400	8400	8400	8400	8400	8400	8400	8400	8400	8400	8400	8400	8400	8400	8400	8400	8400	8400	8400	8400	8400	8400	8400	8400			
	36	38	43	46	50	52	55	57	59	60	62	63	64	65															
3.5	8400	8400	8400	8400	8400	8400	8400	8400	8400	8400	8400	8400	8400	8400	8400	8400	8400	8400	8400	8400	8400	8400	8400	8400	8400	8400			
	27	30	36	41	45	48	51	53	55	57	59	60	62	63	64	65													
4.0	8400	8400	8400	8400	8400	8400	8400	8400	8400	8400	8400	8400	8400	8400	8400	8400	8400	8400	8400	8400	8400	8400	8400	8400	8400	8400			
	(4.2)	19	29	35	40	44	47	50	52	54	56	58	59	60	62	63	64	65											
5.0	8400	8400	8400	8400	8400	8400	8400	8400	8400	8400	8400	8400	8400	8400	8400	8400	8400	8400	8400	8400	8400	8400	8400	8400	8400	8400			
	(4.3)	18	27	33	38	41	44	47	49	52	53	55	57	58	59	61	62	63	64	65									
6.0				7950	7100	6850	6850	6850	6800	6800	6800	6750	6750	6750	6750	6700	6700	6700	6750	6750	6800	6850	6850	6900	6500	5850			
				(5.3)	17	25	31	36	39	42	45	47	49	51	53	54	56	57	58	59	60	61	62	63	64				
7.0							6400	5800	5650	5600	5600	5600	5600	5600	5550	5550	5550	5550	5550	5600	5650	5650	5700	5700	5750	5800			
							(6.3)	(6.8)	16	24	30	34	37	40	43	45	47	49	51	52	54	55	56	57	59	61			
8.0									5300	4850	4700	4700	4700	4700	4700	4700	4650	4650	4700	4750	4750	4800	4800	4850	4850	4900			
									(7.3)	(7.8)	15	23	28	33	36	39	41	44	46	48	49	51	52	53	55	57			
9.0											4450	4100	4000	4000	4000	4000	4000	4000	4000	4000	4050	4050	4100	4150	4200	4200			
											(8.3)	(8.8)	14	22	27	31	35	37	40	42	44	46	48	49	51	53			
10											3800	3550	3450	3450	3450	3450	3450	3450	3450	3500	3550	3600	3600	3650	3650	3650			
											(9.3)	(9.8)	14	21	26	30	34	36	39	41	43	45	46	48	50				
11															3300	3050	3000	3000	3000	3050	3100	3100	3150	3200	3200	3200			
															(10.3)	13	20	26	29	32	35	37	40	42	43	45			
12																2850	2650	2600	2650	2650	2700	2750	2800	2800	2850	2850			
																(11.3)	14	20	24	28	31	34	36	39	41				
13																	2450	2350	2350	2400	2400	2450	2450	2500	2500	2500			
																(12.4)	12	(12.8)	12	19	24	27	30	33	36				
14																				2250	2150	2100	2150	2200	2200	2250			
																				(13.3)	(13.8)	12	18	23	27	30			
15																							2050	1950	1950	2000			
																						(14.3)	(14.8)	12	18	24			
16.4																									1850	1700			
																								(15.3)	(15.8)	(16.4)			



MAC-25 OFFSET HEAD BOTTOM POSITION LOAD CHART - 40 DEG

COUNTERWEIGHT ON REAR OF CRANE - SPRING LOCKOUTS ENGAGED

S.W.L IN KILOGRAMS FOR SLEW ANGLES OF GREATER THAN 10 DEGREES UP TO 40 DEGREES EITHER SIDE OF STRAIGHT AHEAD (INDICATED BY RED LED ON DASH).  
BOOM ANGLE - UNDEFLECTED (REF.)

NOTE : VALUES IN BRACKETS ( ) ARE ACTUAL RADIUS AT ZERO DEG. BOOM ANGLE.

LMI DUTY

203

S.W.L. ARE BASED ON 66.7% STABILITY & STRENGTH

- S.W.L. ABOVE BOLD RED LINE ARE STRUCTURAL

S.W.L. ARE BASED ON FIRM LEVEL GROUND (1% SLOPE (0.6 DEG) AS PER AS1418.5) WITH TYRES INFLATED AS PER NOTES

LIFT & CARRY - THE S.W.L. SHALL BE CARRIED WITH THE MINIMUM BOOM LENGTH & AS CLOSE TO THE GROUND AS POSSIBLE AT SPEEDS NOT IN EXCESS OF 0.4 M/SEC (1.44 KM/HR)

Radius in Metres	BOOM PIVOT TO EDGE OF SHEAVE - THIRD BOOM RETRACTED (metres)																				THIRD BOOM EXTENDING (metres)									
	6.86	7.00	7.50	8.00	8.50	9.00	9.50	10.00	10.50	11.00	11.50	12.00	12.50	13.00	13.50	14.00	14.50	15.06	15.50	16.00	16.50	17.00	17.50	18.00	18.50	19.16				
1.4	8400	8400	8400	8400	8400	8400	8400	8400	8400	8400	8400	8400	8400	8400	8400	8400	8400	8400	8400	8400	8400	8400	8400	8400	8400	8400	8400			
	55	56	59	61	63	65																								
2.0	8400	8400	8400	8400	8400	8400	8400	8400	8400	8400	8400	8400	8400	8400	8400	8400	8400	8400	8400	8400	8400	8400	WINCH S.W.L.							
	49	50	53	56	58	60	62	64	65													SINGLE PART		4200						
2.5	8400	8400	8400	8400	8400	8400	8400	8400	8400	8400	8400	8400	8400	8400	8400	8400	8400	8400	8400	8400	8400		TWO PARTS		8400					
	43	44	48	51	54	56	58	60	62	63	65																			
3.0	8400	8400	8400	8400	8400	8400	8400	8400	8400	8400	8400	8400	8400	8400	8400	8400	8400	8400	8400	8400	8400	8400	8400	8400	8400	8400	8400			
	36	38	43	46	50	52	55	57	59	60	62	63	64	65																
3.5	8400	8400	8400	8400	8400	8400	8400	8400	8400	8400	8400	8400	8400	8400	8400	8400	8400	8400	8400	8400	8400	8400	8400	8400	8400	8400	8400			
	27	30	36	41	45	48	51	53	55	57	59	60	62	63	64	65														
4.0	8400	8400	8400	8400	8400	8400	8400	8400	8400	8400	8400	8400	8400	8400	8400	8400	8400	8400	8400	8400	8400	8400	8400	8400	8400	8400	8400			
	(4.2)	19	29	35	40	44	47	50	52	54	56	58	59	60	62	63	64	65												
5.0	8400	7950	7600	7550	7550	7550	7550	7500	7300	7050	6800	6600	6400	6250	6100	5900	5750	5550	5450	5350	5250	5150	5050							
	(4.3)	18	27	33	38	41	44	47	49	52	53	55	57	58	59	61	61	62	63	64	65									
6.0				7050	6300	6050	6050	6000	6000	6000	5900	5700	5550	5350	5250	5100	5000	4850	4800	4700	4650	4550	4500	4450	4350	4300	4300			
				(5.3)	(5.8)	17	25	31	36	39	42	45	47	49	51	53	54	56	57	58	59	60	61	62	63	64	64			
7.0						5650	5100	4950	4950	4950	4900	4900	4850	4700	4550	4450	4350	4250	4200	4150	4100	4050	4000	3950	3900	3850	3850			
						(6.3)	(6.8)	16	24	30	34	37	40	43	45	47	49	51	52	54	55	56	57	59	59	61	61			
8.0								4650	4250	4100	4100	4100	4100	4100	4050	3950	3850	3750	3700	3650	3600	3550	3500	3500	3500	3450	3450			
								(7.3)	(7.8)	15	23	28	33	36	39	41	44	46	48	49	51	52	53	55	56	57	57			
9.0										3900	3550	3450	3450	3450	3450	3400	3300	3300	3250	3200	3200	3200	3150	3150	3100	3050	3050			
										(8.3)	(8.8)	14	22	27	31	35	37	40	42	44	46	48	49	51	52	53	53			
10												3300	3050	2950	2950	2950	2950	2950	2950	2900	2900	2850	2800	2800	2750	2750				
												(9.3)	(9.8)	14	21	26	30	34	36	39	41	43	45	46	48	50	50			
11														2800	2600	2550	2550	2550	2550	2600	2600	2600	2550	2550	2500	2500				
														(10.3)	(10.8)	13	20	26	29	32	35	37	40	42	43	45	45			
12																2400	2250	2200	2200	2250	2300	2300	2350	2300	2300	2300	2300			
																(11.3)	(11.8)	14	20	24	28	31	34	36	39	41	41			
13																		2050	1950	1950	2000	2050	2050	2100	2100	2100	2100			
																		(12.4)	(12.8)	12	19	24	27	30	33	36	36			
14																				1850	1800	1800	1800	1850	1850	1900	1900			
																				(13.3)	(13.8)	12	18	23	27	30	30			
15																						1700	1600	1600	1650	1700	1700			
																						(14.3)	(14.8)	12	18	24	24			
16.4																								1550	1500	1400	1400			
																								(15.3)	(15.8)	(16.4)	(16.4)			

MAC-25 OFFSET HEAD TOP POSITION LOAD CHART - 10 DEG  
COUNTERWEIGHT ON REAR OF CRANE - SPRING LOCKOUTS ENGAGED

S.W.L IN KILOGRAMS FOR SLEW ANGLES OF 10 DEGREES OR LESS EITHER  
SIDE OF STRAIGHT AHEAD (INDICATED BY GREEN LED ON DASH).  
BOOM ANGLE - UNDEFLECTED (REF.)

NOTE : VALUES IN BRACKETS ( ) ARE ACTUAL RADIUS AT ZERO DEG. BOOM ANGLE.

LMI DUTY

204

S.W.L. ARE BASED ON 66.7% STABILITY & STRENGTH

- S.W.L. ABOVE BOLD RED LINE ARE STRUCTURAL

S.W.L. ARE BASED ON FIRM LEVEL GROUND (1% SLOPE (0.6 DEG) AS PER AS1418.5)

WITH TYRES INFLATED AS PER NOTES

LIFT & CARRY - THE S.W.L. SHALL BE CARRIED WITH THE MINIMUM BOOM LENGTH & AS

CLOSE TO THE GROUND AS POSSIBLE AT SPEEDS NOT IN EXCESS OF 0.4 M/SEC (1.44 KM/HR)

Radius in Metres		BOOM PIVOT TO EDGE OF SHEAVE - THIRD BOOM RETRACTED (metres)																			THIRD BOOM EXTENDING (metres)						
		6.82	7.00	7.50	8.00	8.50	9.00	9.50	10.00	10.50	11.00	11.50	12.00	12.50	13.00	13.50	14.00	14.50	15.02	15.50	16.00	16.50	17.00	17.50	18.00	18.50	19.12
1.4	8400	8400	8400	8400	8400	8400	8400	8400																			
	52	53	56	58	60	62	64																				
2.0	8400	8400	8400	8400	8400	8400	8400	8400	8400	8400	8400																
	45	47	50	53	56	58	60	61	63	64													WINCH S.W.L.				
2.5	8400	8400	8400	8400	8400	8400	8400	8400	8400	8400	8400	8400	8400												SINGLE PART		4200
	39	41	45	49	52	54	56	58	60	61	63	64												TWO PARTS		8400	
3.0	8400	8400	8400	8400	8400	8400	8400	8400	8400	8400	8400	8400	8400	8400	8400												
	32	34	40	44	47	50	53	55	57	58	60	61	63	64	65												
3.5	8400	8400	8400	8400	8400	8400	8400	8400	8400	8400	8400	8400	8400	8400	8400	8400	8400	8400									
	24	27	33	38	42	46	49	51	53	55	57	59	60	61	62	63	64										
4.0	8400	8400	8400	8400	8400	8400	8400	8400	8400	8400	8400	8400	8400	8400	8400	8400	8400	8400	8400	8400							
	(4.1)	16	26	32	37	41	45	47	50	52	54	56	57	59	60	61	62	63	64								
5.0	8400	8400	8400	8400	8400	8400	8400	8400	8400	8350	8350	8300	8300	8300	8250	8250	8250	8250	8250	8250	8300	8300	8300	8200	8050	7950	
	(4.3)			15	24	30	35	39	42	45	48	50	52	53	55	56	58	59	60	61	62	63	64	65			
6.0				7950 (5.3)	7100 (5.8)	6800 14	6800 23	6800 29	6750 34	6750 37	6700 40	6700 43	6700 46	6700 48	6650 50	6650 51	6650 53	6600 54	6650 56	6700 57	6750 58	6800 59	6800 60	6800 61	6850 62	6300 63	
7.0						6400	5800	5600	5600	5550	5550	5550	5550	5500	5500	5500	5450	5450	5500	5550	5600	5650	5650	5700	5700	5700	
8.0						(6.3)	(6.8)	14	22	28	32	36	39	41	44	46	48	50	51	53	54	55	56	57	58	59	
								5300 (7.3)	4850 (7.8)	4700 (8.3)	4700 (8.8)	4650 (9.3)	4650 (9.8)	4650 (10.3)	4650 (10.8)	4650 (11.3)	4600 (11.8)	4600 (12.3)	4650 (12.8)	4700 (13.3)	4750 (13.8)	4800 (14.3)	4800 (14.8)	4850 (15.3)	4850 (15.8)	4850 (16.5)	
9.0										4450 (8.3)	4100 (8.8)	4000 12	4000 20	3950 25	3950 30	3950 33	3950 36	3950 39	3950 41	4000 43	4050 45	4100 46	4100 48	4100 49	4150 51	4150 52	
10												3800	3500	3400	3400	3400	3400	3400	3450	3500	3500	3550	3550	3600	3600	3650	
11												(9.3)	(9.8)	12	19	25	29	32	35	37	40	42	43	45	47	48	
														3250	3050	2950	2950	2950	3000	3000	3050	3100	3100	3150	3150	3200	
12														(10.3)	12	19	24	28	31	34	36	38	40	42	44	44	
										NOTE : WEIGHT OF HOOKS, BLOCKS & OTHER LOAD HANDLING DEVICES SHALL BE ADDED TO THE WEIGHT OF THE LOAD				2850 (11.3)	2650 (11.8)	2550 (12.3)	2600 (12.8)	2650 (13.3)	2700 (13.8)	2700 (14.3)	2750 (14.8)	2800 (15.3)	2800 (15.8)	2800 (16.5)			
13																	2450 (12.3)	2350 (12.8)	2350 (13.3)	2400 (13.8)	2400 (14.3)	2450 (14.8)	2450 (15.3)	2500 (15.8)	2500 (16.5)		
14																		2250 (13.3)	2250 (13.8)	2150 (14.3)	2150 (14.8)	2150 (15.3)	2150 (15.8)	2200 (16.3)	2200 (16.8)	2200 (17.3)	
15																											
16.45																											

MAC-25 OFFSET HEAD TOP POSITION LOAD CHART - 40 DEG  
COUNTERWEIGHT ON REAR OF CRANE - SPRING LOCKOUTS ENGAGED

S.W.L IN KILOGRAMS FOR SLEW ANGLES OF GREATER THAN 10 DEGREES UP TO 40  
DEGREES EITHER SIDE OF STRAIGHT AHEAD (INDICATED BY RED LED ON DASH).

BOOM ANGLE - UNDEFLECTED (REF.)

NOTE : VALUES IN BRACKETS ( ) ARE ACTUAL RADIUS AT ZERO DEG. BOOM ANGLE.

LMI DUTY

204

S.W.L. ARE BASED ON 66.7% STABILITY & STRENGTH

- S.W.L. ABOVE BOLD RED LINE ARE STRUCTURAL

S.W.L. ARE BASED ON FIRM LEVEL GROUND (1% SLOPE (0.6 DEG) AS PER AS1418.5)

WITH TYRES INFLATED AS PER NOTES

LIFT & CARRY - THE S.W.L. SHALL BE CARRIED WITH THE MINIMUM BOOM LENGTH & AS

CLOSE TO THE GROUND AS POSSIBLE AT SPEEDS NOT IN EXCESS OF 0.4 M/SEC (1.44 KM/HR)

Radius in Metres	BOOM PIVOT TO EDGE OF SHEAVE - THIRD BOOM RETRACTED (metres)																				THIRD BOOM EXTENDING (metres)									
	6.82	7.00	7.50	8.00	8.50	9.00	9.50	10.00	10.50	11.00	11.50	12.00	12.50	13.00	13.50	14.00	14.50	15.02	15.50	16.00	16.50	17.00	17.50	18.00	18.50	19.12				
1.4	8400	8400	8400	8400	8400	8400	8400	8400																						
	52	53	56	58	60	62	64																							
2.0	8400	8400	8400	8400	8400	8400	8400	8400	8400	8400													WINCH S.W.L.							
	45	47	50	53	56	58	60	61	63	64												SINGLE PART TWO PARTS								
2.5	8400	8400	8400	8400	8400	8400	8400	8400	8400	8400	8400	8400																		
3.0	39	41	45	49	52	54	56	58	60	61	63	64																		
	8400	8400	8400	8400	8400	8400	8400	8400	8400	8400	8400	8400	8400	8250	7950															
3.5	8400	8400	8400	8400	8400	8400	8400	8400	8400	8400	8400	8250	7950	7650	7400	7200	6950													
	24	27	33	38	42	46	49	51	53	55	57	59	60	61	62	63	64													
4.0	8400	8400	8400	8400	8400	8400	8400	8400	8400	8400	8400	8250	7950	7700	7400	7150	6900	6700	6500	6300	6150									
	(4.1)	16	26	32	37	41	45	47	50	52	54	56	57	59	60	61	62	63	64											
5.0		8400	7900	7550	7500	7500	7450	7450	7450	7200	6950	6750	6550	6350	6200	6000	5850	5700	5500	5400	5300	5200	5100	5050	4950					
6.0		(4.3)	(4.8)	15	24	30	35	39	42	45	48	50	52	53	55	56	58	59	60	61	62	63	64	65						
				7000	6250	6000	6000	5950	5950	5950	5850	5650	5450	5300	5200	5050	4950	4800	4750	4700	4600	4550	4450	4400	4300	4250				
7.0				(5.3)	(5.8)	14	23	29	34	37	40	43	46	48	50	51	53	54	56	57	58	59	60	61	62	63				
						5650	5100	4900	4900	4900	4850	4850	4800	4650	4550	4400	4300	4200	4150	4100	4050	4000	3950	3900	3850	3800				
8.0						(6.3)	(6.8)	14	22	28	32	36	39	41	44	46	48	50	51	53	54	55	56	57	58	59				
								4650	4250	4100	4100	4050	4050	4000	3900	3800	3700	3650	3600	3500	3550	3500	3500	3450	3400	3400				
9.0						(7.3)	(7.8)	13	21	27	31	34	37	40	42	44	46	48	49	51	52	53	55	56	56	56				
								3900	3550	3450	3450	3400	3400	3400	3400	3300	3250	3200	3200	3150	3150	3150	3100	3100	3050	3050				
10										(8.3)	(8.8)	12	20	25	30	33	36	39	41	43	45	46	48	49	51	52				
												3300	3050	2950	2950	2900	2900	2900	2950	2900	2850	2850	2800	2750	2750					
11												(9.3)	(9.8)	12	19	25	29	32	35	37	40	42	43	45	47	48				
														2800	2600	2500	2500	2500	2550	2600	2600	2550	2550	2500	2500					
12												(10.3)	(10.8)	12	19	24	28	31	34	36	38	40	42	44	44	44				
														2400	2250	2150	2200	2250	2250	2300	2350	2300	2300	2300	2250	2250				
13																(11.3)	(11.8)	12	18	23	27	30	33	35	37	40				
																	2050	1950	1950	2000	2000	2050	2050	2050	2100	2050				
14																				1850	1800	1750	1800	1800	1850	1900				
																			(13.3)	(13.8)	11	17	22	25	29	29				
15																														
																				1700	1600	1600	1650	1650	1650	1650				
16.45																														
																				(14.3)	(14.8)	10	17	22	22	22				

MAC-25 3m FLYJIB TOP POSITION AT 0 DEG OFFSET LOAD CHART

COUNTERWEIGHT ON REAR OF CRANE - SPRING LOCKOUTS ENGAGED

LMI DUTY

205

PIVOT TO FLY JIB MAX LENGTH 21.4m	
MAX RADIUS	SWL
6.10	1500
	65
7.76	1500
	60
9.34	1200
	55
10.83	1200
	50
12.22	970
	45
13.49	970
	40
14.65	850
	35
15.67	850
	30
16.55	770
	25
17.29	770
	20
17.88	750
	15
18.31	750
	10
18.58	750
	5
18.69	750
	0



S.W.L IN KILOGRAMS FOR SLEW ANGLES UP TO 40 DEGREES EITHER SIDE OF STRAIGHT AHEAD (INDICATED BY RED LED ON DASH).



BOOM ANGLE - UNDEFLECTED (REF.)

NOTE: VALUES IN BRACKETS ( ) ARE ACTUAL RADIUS AT ZERO DEG. BOOM ANGLE.

SWL IS AT THIS RADIUS

SPRING LOCKOUTS ARE TO BE ENGAGED FOR ALL LIFTING OPERATIONS

S.W.L. ARE BASED ON 66.6% STABILITY & STRENGTH

ALL FLYJIB S.W.L.'S ARE STRUCTURAL

S.W.L. ARE BASED ON FIRM LEVEL GROUND (1% SLOPE (0.6 DEG) AS PER AS1418.5)

WITH TYRES INFLATED AS PER NOTES

LIFT & CARRY - THE S.W.L. SHALL BE CARRIED WITH THE MINIMUM BOOM LENGTH & AS

CLOSE TO THE GROUND AS POSSIBLE AT SPEEDS NOT IN EXCESS OF 0.4 M/SEC (1.44 KM/HR)

FLYJIB S.W.L.'S AND RADII ARE BASED ON FULLY EXTENDED BOOM.

FOR OPERATION WITH THE BOOM PART OR FULLY RETRACTED

THE SWL WILL BE BASED ON THE BOOM ANGLE, NOT THE ACTUAL RADIUS.

NOTE : WEIGHT OF HOOKS, BLOCKS & OTHER  
LOAD HANDLING DEVICES SHALL BE ADDED  
TO THE WEIGHT OF THE LOAD

MAC-25 3m FLYJIB TOP POSITION AT 12.5 DEG OFFSET LOAD CHART  
COUNTERWEIGHT ON REAR OF CRANE - SPRING LOCKOUTS ENGAGED

LMI DUTY **206**

PIVOT TO FLY JIB MAX LENGTH 21.4m	
MAX RADIUS	SWL
6.60	1300
	65
8.23	1300
	60
9.78	1120
	55
11.24	1120
	50
12.59	920
	45
13.83	920
	40
14.94	820
	35
15.92	820
	30
16.76	770
	25
17.45	770
	20
17.99	750
	15
18.37	750
	10
18.59	750
	5
18.65	750
	0



S.W.L IN KILOGRAMS FOR SLEW ANGLES UP TO 40 DEGREES EITHER SIDE OF STRAIGHT AHEAD (INDICATED BY RED LED ON DASH).  
BOOM ANGLE - UNDEFLECTED (REF )  
NOTE: VALUES IN BRACKETS ( ) ARE ACTUAL RADIUS AT ZERO DEG. BOOM ANGLE.  
SWL IS AT THIS RADIUS

SPRING LOCKOUTS ARE TO BE ENGAGED FOR ALL LIFTING OPERATIONS

S.W.L. ARE BASED ON 66.6% STABILITY & STRENGTH  
ALL FLYJIB S.W.L.'S ARE STRUCTURAL  
S.W.L. ARE BASED ON FIRM LEVEL GROUND (1% SLOPE (0.6 DEG) AS PER AS1418.5)  
WITH TYRES INFLATED AS PER NOTES  
LIFT & CARRY - THE S.W.L. SHALL BE CARRIED WITH THE MINIMUM BOOM LENGTH & AS CLOSE TO THE GROUND AS POSSIBLE AT SPEEDS NOT IN EXCESS OF 0.4 M/SEC (1.44 KM/HR)

FLYJIB S.W.L.'S AND RADII ARE BASED ON FULLY EXTENDED BOOM.  
FOR OPERATION WITH THE BOOM PART OR FULLY RETRACTED  
THE SWL WILL BE BASED ON THE BOOM ANGLE, NOT THE ACTUAL RADIUS.

NOTE : WEIGHT OF HOOKS, BLOCKS & OTHER  
LOAD HANDLING DEVICES SHALL BE ADDED  
TO THE WEIGHT OF THE LOAD

MAC-25 4m FLYJIB TOP POSITION AT 5 DEG OFFSET LOAD CHART  
COUNTERWEIGHT ON REAR OF CRANE - SPRING LOCKOUTS ENGAGED

LMI DUTY **207**

PIVOT TO FLY JIB MAX LENGTH 22.48m		
MAX RADIUS		SWL
6.85		700
		65
8.58		600
		60
10.23		600
		55
11.77		600
		50
13.21		600
		45
14.53		500
		40
15.72		500
		35
16.77		500
		30
17.67		500
		25
18.42		500
		20
19.00		500
		15
19.43		500
		10
19.68		500
		5
19.77		500
		0



S.W.L IN KILOGRAMS FOR SLEW ANGLES UP TO 40 DEGREES EITHER SIDE OF STRAIGHT AHEAD (INDICATED BY RED LED ON DASH).



BOOM ANGLE - UNDEFLECTED (REF.)

NOTE: VALUES IN BRACKETS ( ) ARE ACTUAL RADIUS AT ZERO DEG. BOOM ANGLE.

SWL IS AT THIS RADIUS

SPRING LOCKOUTS ARE TO BE ENGAGED FOR ALL LIFTING OPERATIONS

S.W.L. ARE BASED ON 66.6% STABILITY & STRENGTH

ALL FLYJIB S.W.L.'S ARE STRUCTURAL

S.W.L. ARE BASED ON FIRM LEVEL GROUND (1% SLOPE (0.6 DEG) AS PER AS1418.5)

WITH TYRES INFLATED AS PER NOTES

LIFT & CARRY - THE S.W.L. SHALL BE CARRIED WITH THE MINIMUM BOOM LENGTH & AS

CLOSE TO THE GROUND AS POSSIBLE AT SPEEDS NOT IN EXCESS OF 0.4 M/SEC (1.44 KM/HR)

FLYJIB S.W.L.'S AND RADII ARE BASED ON FULLY EXTENDED BOOM.

FOR OPERATION WITH THE BOOM PART OR FULLY RETRACTED

THE SWL WILL BE BASED ON THE BOOM ANGLE, NOT THE ACTUAL RADIUS.

NOTE : WEIGHT OF HOOKS, BLOCKS & OTHER  
LOAD HANDLING DEVICES SHALL BE ADDED  
TO THE WEIGHT OF THE LOAD

**MAC-25 4m FLYJIB BOTTOM POSITION AT 17.5 DEG OFFSET LOAD CHART**  
**COUNTERWEIGHT ON REAR OF CRANE - SPRING LOCKOUTS ENGAGED**

LMI DUTY

**208**

PIVOT TO FLY JIB MAX LENGTH 22.41m		
MAX RADIUS	SWL	
7.82	600	
	65	
9.50	600	
	60	
11.09	600	
	55	
12.57	500	
	50	
13.94	500	
	45	
15.18	500	
	40	
16.29	500	
	35	
17.25	500	
	30	
18.07	500	
	25	
18.72	500	
	20	
19.22	500	
	15	
19.55	500	
	10	
19.70	500	
	5	
19.70	500	
	0	



S.W.L IN KILOGRAMS FOR SLEW ANGLES UP TO 40 DEGREES EITHER SIDE OF STRAIGHT AHEAD (INDICATED BY RED LED ON DASH).



BOOM ANGLE - UNDEFLECTED (REF.)

NOTE: VALUES IN BRACKETS ( ) ARE ACTUAL RADIUS AT ZERO DEG. BOOM ANGLE.

SWL IS AT THIS RADIUS

SPRING LOCKOUTS ARE TO BE ENGAGED FOR ALL LIFTING OPERATIONS

S.W.L. ARE BASED ON 66.6% STABILITY & STRENGTH

ALL FLYJIB S.W.L.'S ARE STRUCTURAL

S.W.L. ARE BASED ON FIRM LEVEL GROUND (1% SLOPE (0.6 DEG) AS PER AS1418.5)

WITH TYRES INFLATED AS PER NOTES

LIFT & CARRY - THE S.W.L. SHALL BE CARRIED WITH THE MINIMUM BOOM LENGTH & AS

CLOSE TO THE GROUND AS POSSIBLE AT SPEEDS NOT IN EXCESS OF 0.4 M/SEC (1.44 KM/HR)

FLYJIB S.W.L.'S AND RADII ARE BASED ON FULLY EXTENDED BOOM.

FOR OPERATION WITH THE BOOM PART OR FULLY RETRACTED

THE SWL WILL BE BASED ON THE BOOM ANGLE, NOT THE ACTUAL RADIUS.

**NOTE : WEIGHT OF HOOKS, BLOCKS & OTHER  
LOAD HANDLING DEVICES SHALL BE ADDED  
TO THE WEIGHT OF THE LOAD**

**MAC-25 MAN BASKET LOAD CHART**  
COUNTERWEIGHT ON REAR OF CRANE - SPRING LOCKOUTS ENGAGED

LMI DUTY

**209**

**MAXIMUM MANBASKET SWL: 275 KG (SEE NOTE BELOW)**  
**BASKET WEIGHT: 225 KG**

*Read and understand warning notes before  
operating crane*

**NOTE:** THE TOTAL WEIGHT OF THE MANBASKET PLUS  
MEN AND EQUIPMENT IS NOT TO EXCEED 1/3 OF  
THE SAFE WORKING LOAD AS READ ON LOAD  
CHART (FALL BLOCK LOAD CHART - DUTY 201)  
FOR THE BOOM LENGTH AND RADIUS BEING USED.



MAC-25 BUTT LUG - 10 DEG. ART.

COUNTERWEIGHT ON REAR OF CRANE - SPRING LOCKOUTS ENGAGED



S.W.L IN KILOGRAMS FOR SLEW ANGLES OF 10 DEGREES OR LESS EITHER  
SIDE OF STRAIGHT AHEAD (INDICATED BY GREEN LED ON DASH).



BOOM ANGLE - UNDEFLECTED (REF.)

NOTE.: VALUES IN BRACKETS ( ) ARE ACTUAL RADIUS AT ZERO DEG. BOOM ANGLE.

SWL IS AT THIS RADIUS

S.W.L. ARE BASED ON 66.7% STABILITY & STRENGTH - S.W.L. ABOVE BOLD RED LINE ARE STRUCTURAL

S.W.L. ARE BASED ON FIRM LEVEL GROUND (1% SLOPE (0.6 DEG) AS PER AS1418.5) WITH TYRES INFLATED AS PER NOTES

LIFT & CARRY - THE S.W.L. SHALL BE CARRIED WITH THE MINIMUM BOOM LENGTH & AS CLOSE TO THE GROUND AS POSSIBLE AT SPEEDS NOT IN EXCESS OF 0.4 M/SEC (1.44 KM/HR)

NOTE : WEIGHT OF HOOKS, BLOCKS & OTHER LOAD HANDLING DEVICES SHALL BE ADDED TO THE WEIGHT OF THE LOAD

Radius in Metres	Boom Length (metres)
1.4	25000
	32
1.5	24650
	30
1.6	24200
	27
1.7	23800
	24
1.8	23350
	21
1.9	22950
	18
2.1	20950
	0

NOTE : WEIGHT OF HOOKS, BLOCKS & OTHER  
LOAD HANDLING DEVICES SHALL BE ADDED  
TO THE WEIGHT OF THE LOAD

Radius in Metres	Boom Length (metres)
1.4	25000
	32
1.5	24650
	30
1.6	24200
	27
1.7	23600
	24
1.8	22200
	21
1.9	20900
	18
2.1	18650
	0

LMI DUTY

210

MAC-25 BUTT LUG - 40 DEG. ART.

COUNTERWEIGHT ON REAR OF CRANE - SPRING LOCKOUTS ENGAGED



S.W.L IN KILOGRAMS FOR SLEW ANGLES OF GREATER THAN 10 DEGREES UP TO 40  
DEGREES EITHER SIDE OF STRAIGHT AHEAD (INDICATED BY RED LED ON DASH).



BOOM ANGLE - UNDEFLECTED (REF.)

NOTE.: VALUES IN BRACKETS ( ) ARE ACTUAL RADIUS AT ZERO DEG. BOOM ANGLE.

SWL IS AT THIS RADIUS

MAC25 LUG 1 LOAD CHART - 10 DEG. ART.  
COUNTERWEIGHT ON REAR OF CRANE - SPRING LOCKOUTS ENGAGED

S.W.L IN KILOGRAMS FOR SLEW ANGLES OF 10 DEGREES OR LESS EITHER  
SIDE OF STRAIGHT AHEAD (INDICATED BY GREEN LED ON DASH).  
BOOM ANGLE - UNDEFLECTED (REF.)

NOTE: VALUES IN BRACKETS ( ) ARE ACTUAL RADIUS AT ZERO DEG. BOOM ANGLE  
SWL IS AT THIS RADIUS

S.W.L. ARE BASED ON 66.7% STABILITY & STRENGTH - S.W.L. ABOVE BOLD RED LINE ARE STRUCTURAL  
S.W.L. ARE BASED ON FIRM, LEVEL GROUND (1% SLOPE (0.6 DEG))AS PER AS1418.5) WITH TYRES INFLATED AS PER NOTES

LIFT & CARRY - THE S.W.L. SHALL BE CARRIED WITH THE MINIMUM BOOM LENGTH & AS CLOSE TO THE GROUND AS POSSIBLE AT SPEEDS NOT IN EXCESS OF 0.4 M/SEC (1.44 KM/HR)  
NOTE : WEIGHT OF HOOKS, BLOCKS & OTHER LOAD HANDLING DEVICES SHALL BE ADDED TO THE WEIGHT OF THE LOAD

RADIUS IN METRES	BOOM PIVOT TO LUG 1, 1st EXTENSION, THIRD EXTENSION RETRACTED (metres)												
	5.36	5.50	6.00	6.50	7.00	7.50	8.00	8.50	9.00	9.46			
1.4	25000	25000	25000	25000	25000	25000	25000	24800	24650	24000			
	40	42	47	51	54	57	59	61	63	64			
2	22650	22550	22250	21950	21750	21500	21350	21150	21000	20900			
	29	31	38	44	48	51	54	56	59	60			
2.5	17750	17700	17450	17200	17000	16800	16650	16500	16400	16300			
	14	19	30	37	42	46	49	52	55	57			
3	16600	15600	14200	14000	13850	13700	13550	13400	13300	13200			
	(2.7)	(2.8)	18	29	35	41	45	48	51	53			
3.5			12700	11750	11600	11450	11300	11200	11100	11000			
			(3.3)	17	28	34	39	43	46	49			
4				10550	9850	9750	9600	9500	9400	9350			
				(3.8)	17	27	33	38	42	45			
5					8950	7650	7250	7150	7100	7000			
					(4.3)	16	25	31	36				
6							6600	5750	5500	5450			
							(5.3)	(5.8)	15	23			
6.8									5000	4450			
									(6.3)	(6.8)			

LMI DUTY

211

MAC25 LUG 1 LOAD CHART - 40 DEG. ART.  
COUNTERWEIGHT ON REAR OF CRANE - SPRING LOCKOUTS ENGAGED

S.W.L IN KILOGRAMS FOR SLEW ANGLES OF GREATER THAN 10 DEGREES UP TO 40  
DEGREES EITHER SIDE OF STRAIGHT AHEAD (INDICATED BY RED LED ON DASH).  
BOOM ANGLE - UNDEFLECTED (REF.)

NOTE: VALUES IN BRACKETS ( ) ARE ACTUAL RADIUS AT ZERO DEG. BOOM ANGLE  
SWL IS AT THIS RADIUS

S.W.L. ARE BASED ON 66.7% STABILITY & STRENGTH - S.W.L. ABOVE BOLD RED LINE ARE STRUCTURAL

S.W.L. ARE BASED ON FIRM, LEVEL GROUND (1% SLOPE (0.6 DEG))AS PER AS1418.5) WITH TYRES INFLATED AS PER NOTES

LIFT & CARRY - THE S.W.L. SHALL BE CARRIED WITH THE MINIMUM BOOM LENGTH & AS CLOSE TO THE GROUND AS POSSIBLE AT SPEEDS NOT IN EXCESS OF 0.4 M/SEC (1.44 KM/HR)

NOTE : WEIGHT OF HOOKS, BLOCKS & OTHER LOAD HANDLING DEVICES SHALL BE ADDED TO THE WEIGHT OF THE LOAD

RADIUS IN METRES	BOOM PIVOT TO LUG 1, 1st EXTENSION, THIRD EXTENSION RETRACTED (metres)												
	5.36	5.50	6.00	6.50	7.00	7.50	8.00	8.50	9.00	9.46			
1.4	25000	24900	19800	17850	16350	15100	14100	13200	12400	11800			
	40	42	47	51	54	57	59	61	63	64			
2	20250	20150	19500	17800	15200	13900	12850	11950	11200	10600			
	29	31	38	44	48	51	54	56	59	60			
2.5	15800	15750	15500	15250	14600	13550	12700	11050	10300	9750			
	14	19	30	37	42	46	49	52	55	57			
3	14750	13850	12600	12400	12200	12050	11300	10650	10050	8950			
	(2.7)	(2.8)	18	29	35	41	45	48	51	53			
3.5			11200	10350	10200	10050	9900	9550	9000	8550			
			(3.3)	17	28	34	39	43	46	49			
4				9300	8650	8550	8400	8300	8100	7700			
				(3.8)	17	27	33	38	42	45			
5					7800	6650	6300	6200	6100	6050			
					(4.3)	16	25	31	36				
6							5700	4900	4700	4650			
							(5.3)	(5.8)	15	23			
6.8									4250	3750			
									(6.3)	(6.8)			

MAC-25 LUG 2 LOAD CHART - 10 DEG. ART.

COUNTERWEIGHT ON REAR OF CRANE - SPRING LOCKOUTS ENGAGED

S.W.L IN KILOGRAMS FOR SLEW ANGLES OF 10 DEGREES OR LESS EITHER  
SIDE OF STRAIGHT AHEAD (INDICATED BY GREEN LED ON DASH)

BOOM ANGLE - UNDEFLECTED (REF.)

NOTE: VALUES IN BRACKETS ( ) ARE ACTUAL RADIUS AT ZERO DEG. BOOM ANGLE.

ENSURE WINCH ROPE IS FULLY TENSIONED

LIFT & CARRY - THE S.W.L. SHALL BE CARRIED WITH THE MIN BOOM LENGTH & AS CLOSE  
TO THE GROUND AS POSSIBLE AT SPEEDS NOT IN EXCESS OF 0.4 M/SEC (1.44 KM/HR)

LMI DUTY

212

S.W.L. ARE BASED ON 66.7% STABILITY & STRENGTH

-S.W.L. ABOVE BOLD RED LINE ARE STRUCTURAL

S.W.L. ARE BASED ON FIRM LEVEL GROUND (1% SLOPE (0.6 DEG) AS

PER AS1418.5) WITH TYRES INFLATED AS PER NOTES

Radius in Metres	BOOM PIVOT TO LUG 2, 2nd EXTENSION, THIRD EXTENSION RETRACTED (metres)																	
	5.57	6.00	6.50	7.00	7.50	8.00	8.50	9.00	9.50	10.00	10.50	11.00	11.50	12.00	12.50	13.00	13.50	13.77
1.4	25000	25000	25000	25000	25000	25000	25000	25000	25000									
	42	46	50	54	57	59	61	63	64									
2	22800	22750	22750	22700	22700	22650	22650	22600	22550	21850	19400							
	32	38	43	47	51	54	56	58	60	62	63	64						
2.5	17900	17900	17900	17850	17850	17850	17800	17800	17800	17750	17750	17700	16550	15650				
	20	29	36	42	46	49	52	54	57	58	60	62	63	64				
3	15350	14650	14600	14600	14600	14600	14550	14550	14550	14550	14500	14400	13600	12900	12200			
	15	18	28	35	40	44	48	50	53	55	57	59	60	61	63			
3.5	15350	13150	12300	12300	12300	12300	12300	12300	12250	12250	12250	12250	12250	12200	11900	11250	10900	
	(2.9)	(3.3)	17	27	34	39	43	46	49	51	54	55	57	59	60	61	62	63
4			11200	10550	10600	10550	10550	10550	10550	10550	10550	10500	10500	10500	10500	10450	10150	
			(3.8)	16	26	33	38	42	45	48	50	52	54	56	57	59	60	61
5				9650	8500	8150	8150	8150	8150	8100	8100	8100	8100	8100	8100	8100	8050	
				(4.3)	(4.8)	15	25	31	36	39	43	45	48	50	52	53	55	56
6						7500	6700	6500	6500	6500	6500	6500	6500	6500	6500	6500	6450	6450
						(5.3)	(5.8)	14	23	29	34	37	41	43	46	48	50	51
7								6050	5500	5350	5350	5350	5350	5350	5350	5350	5350	5350
								(6.3)	(6.8)	14	22	28	32	36	39	42	44	45
8										5000	4550	4450	4450	4450	4450	4450	4450	4450
										(7.3)	(7.8)	13	21	27	31	34	37	39
9												4200	3850	3800	3800	3800	3800	3800
												(8.3)	(8.8)	12	20	26	30	32
10														3550	3300	3250	3250	3250
														(9.3)	(9.8)	12	19	23
11																3050	2800	2800
																(10.3)	(10.8)	6
11.1																		2700
																		(11.1)

**MAC-25 LUG 2 LOAD CHART - 40 DEG. ART.**  
**COUNTERWEIGHT ON REAR OF CRANE - SPRING LOCKOUTS ENGAGED**

S.W.L IN KILOGRAMS FOR SLEW ANGLES OF GREATER THAN 10 DEGREES UP TO 40 DEGREES EITHER SIDE OF STRAIGHT AHEAD (INDICATED BY RED LED ON DASH)

BOOM ANGLE - UNDEFLECTED (REF.)

NOTE: VALUES IN BRACKETS ( ) ARE ACTUAL RADIUS AT ZERO DEG. BOOM ANGLE.

ENSURE WINCH ROPE IS FULLY TENSIONED

LIFT & CARRY - THE S.W.L. SHALL BE CARRIED WITH THE MIN BOOM LENGTH & AS CLOSE TO THE GROUND AS POSSIBLE AT SPEEDS NOT IN EXCESS OF 0.4 M/SEC (1.44 KM/HR)

LMI DUTY

**212**

S.W.L. ARE BASED ON 66.7% STABILITY & STRENGTH  
- S.W.L. ABOVE BOLD RED LINE ARE STRUCTURAL  
S.W.L. ARE BASED ON FIRM LEVEL GROUND (1% SLOPE (0.6 DEG)  
AS PER AS1418.5) WITH TYRES INFLATED AS PER NOTES

Radius in Metres	BOOM PIVOT TO LUG 2, 2nd EXTENSION, THIRD EXTENSION RETRACTED (METRES)																		
	5.57	6.00	6.50	7.00	7.50	8.00	8.50	9.00	9.50	10.00	10.50	11.00	11.50	12.00	12.50	13.00	13.50	13.77	
1.4	22150	20050	18300	16900	15750	14800	14000	13300	12650										
	42	46	50	54	57	59	61	63	64										
2	20350	19900	18400	15800	14600	13650	12850	12150	11550	11050	10550	10100							
	32	38	43	47	51	54	56	58	60	62	63	64							
2.5	15950	15950	15950	15350	14450	13700	11950	11300	10750	10250	9800	9400	9000	8700					
	20	29	36	42	46	49	52	54	57	58	60	62	63	64					
3	13650	13000	13000	12300	11700	11200	10000	9500	9100	8700	8350	8050	7800	7500	7300				
	14	18	28	35	40	44	48	50	53	55	57	59	60	61	63				
3.5	13650	11650	10950	10950	10950	10900	10600	10100	9700	8850	8450	8100	7750	7500	7250	7000	6750	6650	
	(2.9)	(3.3)	17	27	34	39	43	46	49	51	54	55	57	59	60	61	62	63	
4			9900	9350	9350	9350	9350	9250	8850	8500	8200	7550	7250	6950	6750	6500	6300	6200	
			(3.8)	16	26	33	38	42	45	48	50	52	54	56	57	59	60	61	
5				8550	7450	7150	7150	7150	7150	7150	6950	6700	6500	6300	6150	5850	5500	5400	
				(4.3)	(4.8)	15	25	31	36	39	43	45	48	50	52	53	55	56	
6							6600	5900	5700	5700	5700	5700	5600	5400	5250	5100	5000	4900	
							(5.3)	(5.8)	14	23	29	34	37	41	43	46	48	51	
7									5300	4750	4650	4650	4650	4650	4600	4450	4350	4300	
									(6.3)	(6.8)	14	22	28	32	36	39	42	45	
8										4300	3950	3850	3850	3850	3850	3850	3800	3750	
										(7.3)	(7.8)	13	21	27	31	34	37	39	
9												3600	3300	3250	3250	3250	3250	3250	
												(8.3)	(8.8)	12	20	26	30	32	
10														3000	2800	2750	2750	2750	
														(9.3)	(9.8)	12	19	23	
11																2550	2350	2350	
																(10.3)	(10.8)	6	
11.1																		2250	
																		(11.1)	